

TOMM6 antibody



Catalog Number: 116242

Product name

TOMM6 antibody

Specificity

human, mouse, rat; other species not tested.

Antibody description

TOMM6 Rabbit Polyclonal antibody. Positive WB detected in human skeletal muscle tissue, MCF7 cells. Observed molecular weight by Western-blot: 8kd

Preparation

This antibody was obtained by immunization of TOMM6 recombinant protein (Accession Number: NM_001134493). Purification method: Antigen affinity purified.

Formulation

PBS with 0.02% sodium azide and 50% glycerol pH 7.3.

Storage

Store at -20°C. DO NOT ALIQUOT

Clonality

Polyclonal

Ig Type

Rabbit IgG

Applications

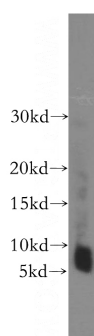
ELISA, WB

Dilutions

Recommended Dilution:

WB: 1:500-1:5000

Validations



human skeletal muscle tissue were subjected to SDS PAGE followed by western blot with Catalog No:116242(TOMM6 antibody) at dilution of 1:400