

EML2 antibody

Catalog Number: 110242

Product name

EML2 antibody

Specificity

Human, Mouse, Rat; other species not tested.

Antibody description

EML2 Rabbit Polyclonal antibody. Positive WB detected in PC-3 cells. Positive IHC detected in human prostate cancer tissue. Observed molecular weight by Western-blot: 55 kDa

Preparation

This antibody was obtained by immunization of EML2 recombinant protein (Accession Number: BC032630). Purification method: Antigen affinity purified.

Formulation

PBS with 0.02% sodium azide and 50% glycerol pH 7.3.

Storage

Store at -20°C. DO NOT ALIQUOT

Clonality

Polyclonal

Ig Type

Rabbit IgG

Applications

ELISA, WB, IHC

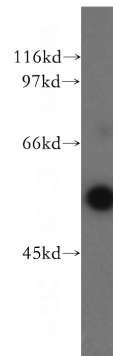
Dilutions

Recommended Dilution:

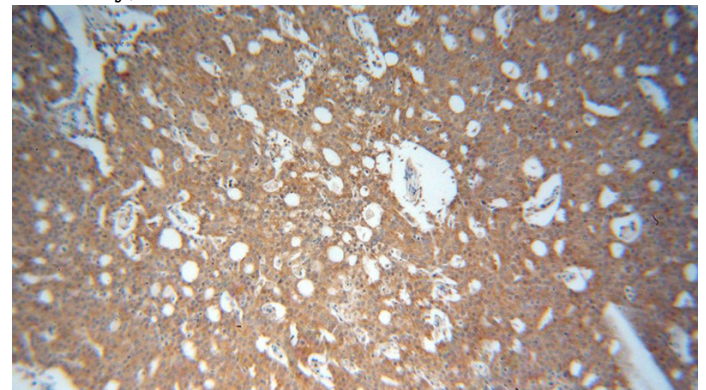
WB: 1:500-1:5000

IHC: 1:20-1:200

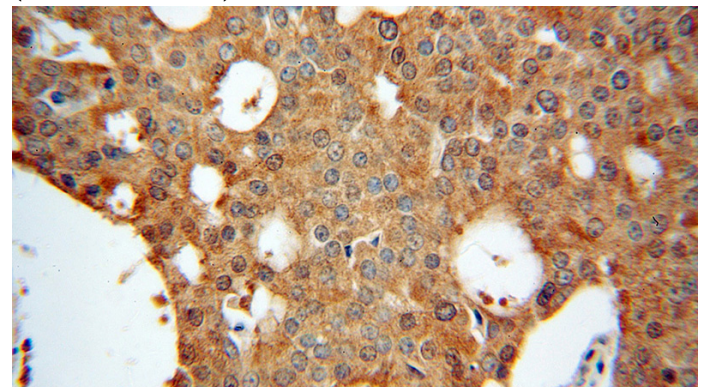
Validations



PC-3 cells were subjected to SDS PAGE followed by western blot with Catalog No:110242(EML2 antibody) at dilution of 1:400



Immunohistochemical of paraffin-embedded human prostate cancer using Catalog No:110242(EML2 antibody) at dilution of 1:100 (under 10x lens)



Immunohistochemical of paraffin-embedded human prostate cancer using Catalog No:110242(EML2 antibody) at dilution of 1:100 (under 40x lens)