

# CBS antibody

Catalog Number: 108942

## Product name

CBS antibody

Recommended Dilution:

WB: 1:200-1:2000

## Specificity

Human, Mouse, Rat; other species not tested.

IP: 1:200-1:2000

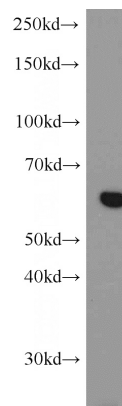
IHC: 1:20-1:200

## Antibody description

CBS Rabbit Polyclonal antibody. Positive IF detected in Hela cells. Positive IHC detected in human pancreas cancer tissue. Positive WB detected in mouse kidney tissue, HeLa cells, mouse brain tissue, rat brain tissue, rat liver tissue. Positive IP detected in mouse kidney tissue. Observed molecular weight by Western-blot: 61kd

IF: 1:20-1:200

## Validations



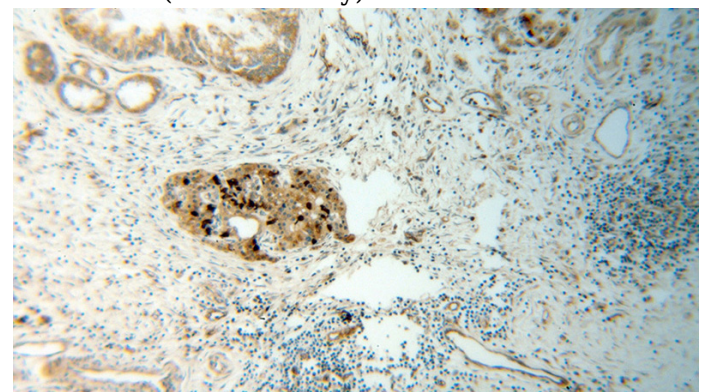
## Preparation

This antibody was obtained by immunization of CBS recombinant protein (Accession Number: NM\_001178009). Purification method: Antigen affinity purified.

mouse kidney tissue were subjected to SDS PAGE followed by western blot with Catalog No:108942(CBS antibody) at dilution of 1:500

## Formulation

PBS with 0.02% sodium azide and 50% glycerol pH 7.3.



## Storage

Store at -20°C. DO NOT ALIQUOT

## Clonality

Polyclonal

## Ig Type

Rabbit IgG

Immunohistochemical of paraffin-embedded human pancreas cancer using Catalog No:108942(CBS antibody) at dilution of 1:100 (under 10x lens)

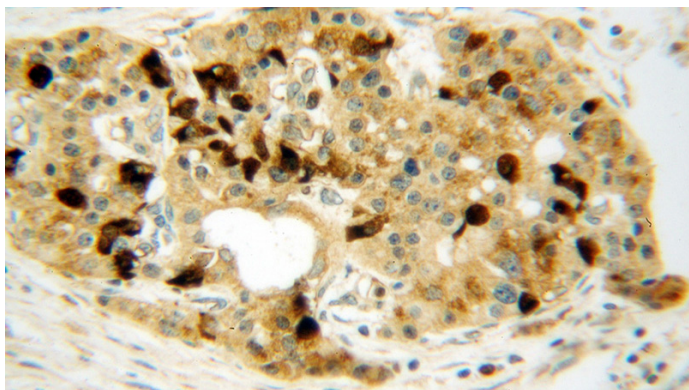
## Applications

ELISA, WB, IHC, IF, IP

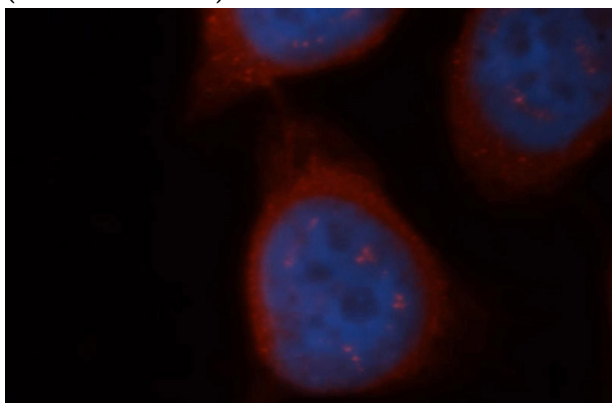
## Dilutions

# CBS antibody

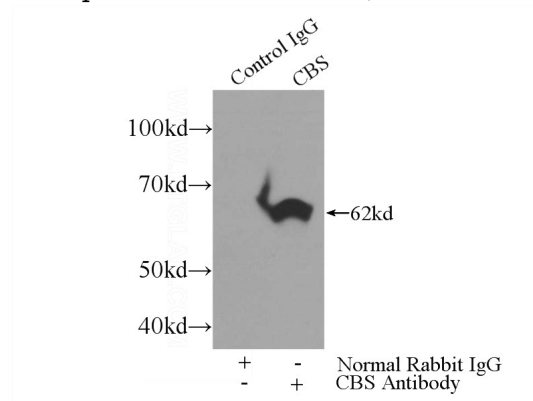
Catalog Number: 108942



Immunohistochemical of paraffin-embedded human pancreas cancer using Catalog No:108942(CBS antibody) at dilution of 1:100 (under 40x lens)



Immunofluorescent analysis of HeLa cells, using CBS antibody Catalog No:108942 at 1:50 dilution and Rhodamine-labeled goat anti-rabbit IgG (red). Blue pseudocolor = DAPI (fluorescent DNA dye).



IP Result of anti-CBS (IP:Catalog No:108942, 3ug; Detection:Catalog No:108942 1:500) with mouse kidney tissue lysate 4000ug.