

# RWDD3 antibody



Catalog Number: 114942

## Product name

RWDD3 antibody

## Immunogen

[Human RWDD3 Recombinant protein \(His tag\)](#)

## Specificity

Human; other species not tested.

## Antibody description

RWDD3 Rabbit Polyclonal antibody. Positive IHC detected in human liver tissue, human heart tissue.

## Preparation

This antibody was obtained by immunization of RWDD3 recombinant protein (Accession Number: NM\_001278247). Purification method: Antigen affinity purified.

## Formulation

PBS with 0.02% sodium azide and 50% glycerol pH 7.3.

## Storage

Store at -20°C. DO NOT ALIQUOT

## Clonality

Polyclonal

## Ig Type

Rabbit IgG

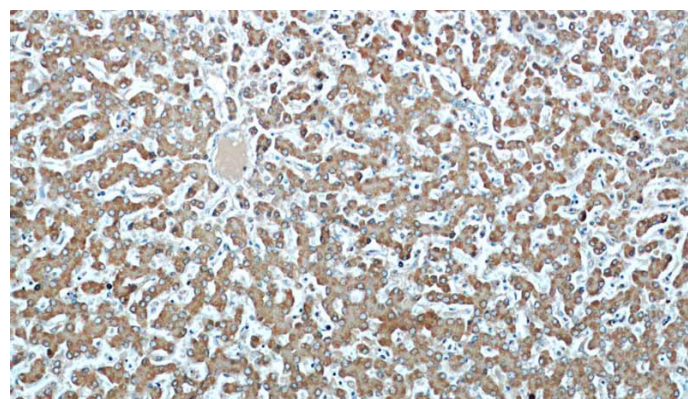
## Applications

ELISA, IHC

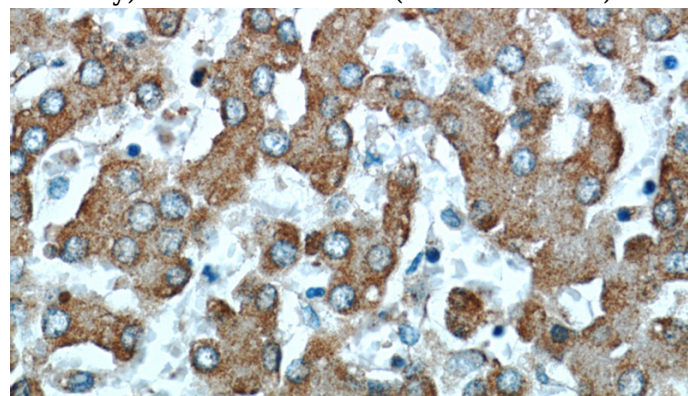
## Dilutions

Recommended Dilution:  
IHC: 1:20-1:200

## Validations



Immunohistochemical of paraffin-embedded human liver using Catalog No:114942(RWDD3 antibody) at dilution of 1:50 (under 10x lens)



Immunohistochemical of paraffin-embedded human liver using Catalog No:114942(RWDD3 antibody) at dilution of 1:50 (under 40x lens)