

plasminogen antibody



Catalog Number: 113942

Product name

plasminogen antibody

IP: 1:200-1:2000

IHC: 1:20-1:200

Specificity

Human, Mouse, Rat; other species not tested.

Antibody description

plasminogen Rabbit Polyclonal antibody. Positive IHC detected in human liver tissue. Positive IP detected in human plasma tissue. Positive WB detected in human blood tissue. Observed molecular weight by Western-blot: 97 kDa

Preparation

This antibody was obtained by immunization of plasminogen recombinant protein (Accession Number: NM_000301). Purification method: Antigen affinity purified.

Formulation

PBS with 0.02% sodium azide and 50% glycerol pH 7.3.

Storage

Store at -20°C. DO NOT ALIQUOT

Clonality

Polyclonal

Ig Type

Rabbit IgG

Applications

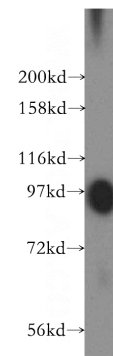
ELISA, WB, IHC, IP

Dilutions

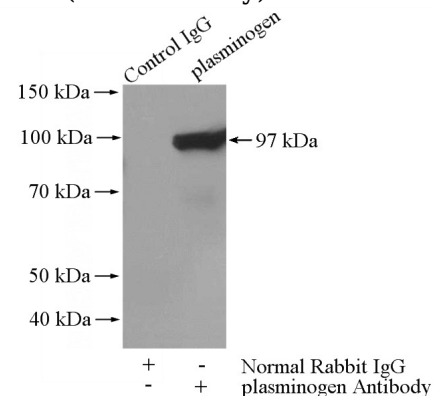
Recommended Dilution:

WB: 1:500-1:5000

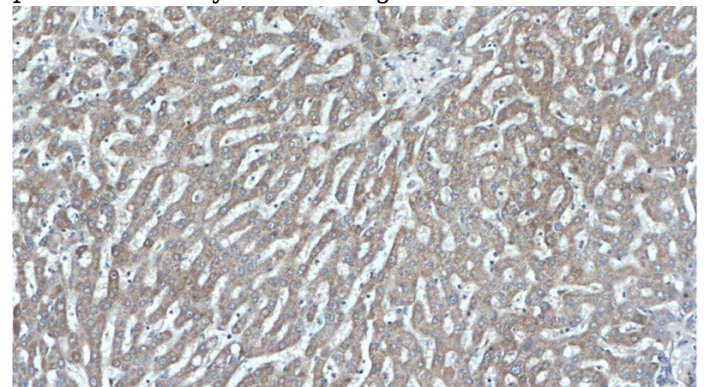
Validations



human blood tissue were subjected to SDS PAGE followed by western blot with Catalog No:113942(PLG antibody) at dilution of 1:400



IP Result of anti-PLG (IP:Catalog No:113942, 2ug; Detection:Catalog No:113942 1:500) with human plasma tissue lysate 4000ug.

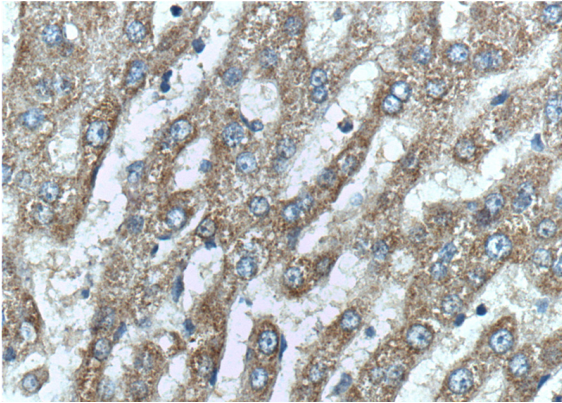


Immunohistochemistry of paraffin-embedded human liver tissue slide using Catalog

plasminogen antibody

Catalog Number: 113942

No:113942(PLG Antibody) at dilution of 1:200
(under 10x lens).



Immunohistochemistry of paraffin-embedded
human liver tissue slide using Catalog
No:113942(PLG Antibody) at dilution of 1:200
(under 40x lens).