

# ISM2 antibody

Catalog Number: 111942

## Product name

ISM2 antibody

IHC: 1:20-1:200

IF: 1:20-1:200

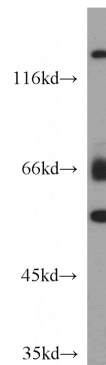
## Specificity

Human, Mouse; other species not tested.

## Validations

## Antibody description

ISM2 Rabbit Polyclonal antibody. Positive WB detected in L02 cells, mouse kidney tissue, mouse pancreas tissue, mouse skin tissue. Positive IHC detected in human placenta tissue, human kidney tissue. Positive IF detected in L02 cells. Observed molecular weight by Western-blot: 65 kDa, 55 kDa



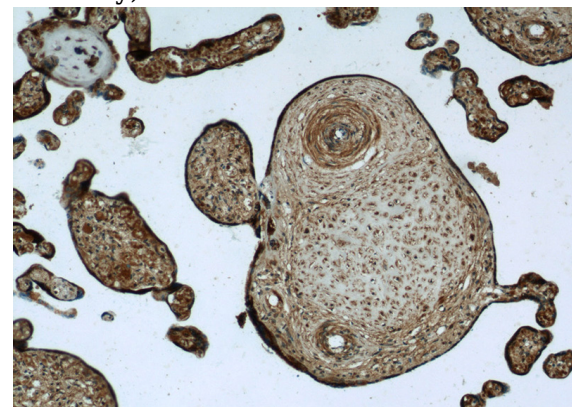
## Preparation

This antibody was obtained by immunization of ISM2 recombinant protein (Accession Number: NM\_199296). Purification method: Antigen affinity purified.

L02 cells were subjected to SDS PAGE followed by western blot with Catalog No:111942(ISM2 antibody) at dilution of 1:500

## Formulation

PBS with 0.1% sodium azide and 50% glycerol pH 7.3.



## Storage

Store at -20°C. DO NOT ALIQUOT

## Clonality

Polyclonal

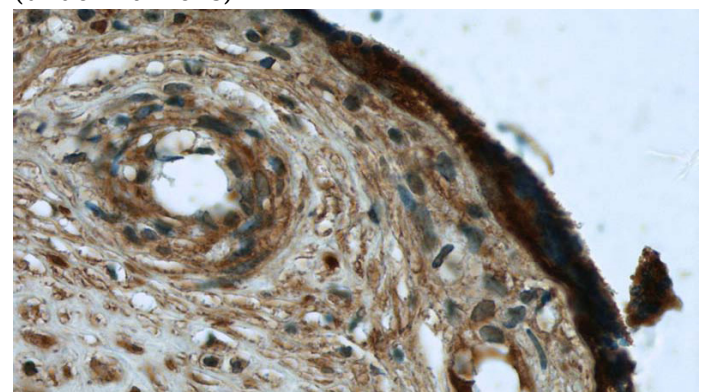
Immunohistochemistry of paraffin-embedded human placenta tissue slide using Catalog No:111942(ISM2 Antibody) at dilution of 1:50 (under 10x lens)

## Ig Type

Rabbit IgG

## Applications

ELISA, IHC, WB, IF



## Dilutions

Recommended Dilution:

WB: 1:200-1:2000

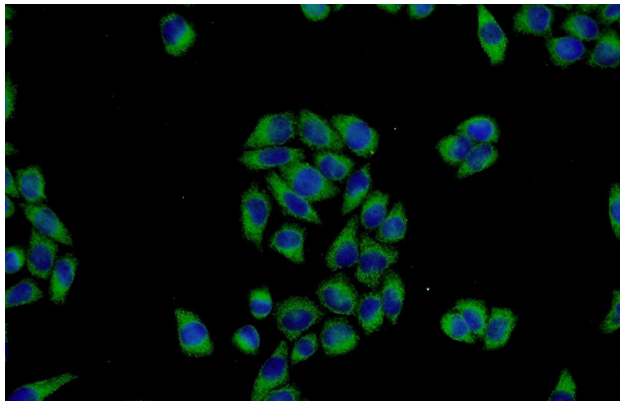
Immunohistochemistry of paraffin-embedded

# ISM2 antibody

Catalog Number: 111942

---

human placenta tissue slide using Catalog No:111942(ISM2 Antibody) at dilution of 1:50 (under 40x lens)



Immunofluorescent analysis of L02 cells using Catalog No:111942(ISM2 Antibody) at dilution of 1:50 and Alexa Fluor 488-conjugated AffiniPure Goat Anti-Rabbit IgG(H+L)