

Creatine Kinase M-Specific antibody



Catalog Number: 109542

Product name

Creatine Kinase M-Specific antibody

WB: 1:1000-1:10000

IP: 1:1000-1:10000

Specificity

Human, Mouse, Rat; other species not tested.

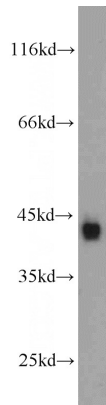
IHC: 1:20-1:200

IF: 1:10-1:100

Antibody description

Creatine Kinase M-Specific Rabbit Polyclonal antibody. Positive IHC detected in human skeletal muscle tissue, rat heart tissue. Positive IF detected in HepG2 cells. Positive WB detected in mouse heart tissue, mouse brain tissue, mouse small intestine tissue. Positive IP detected in mouse brain tissue. Observed molecular weight by Western-blot: 43 kDa

Validations



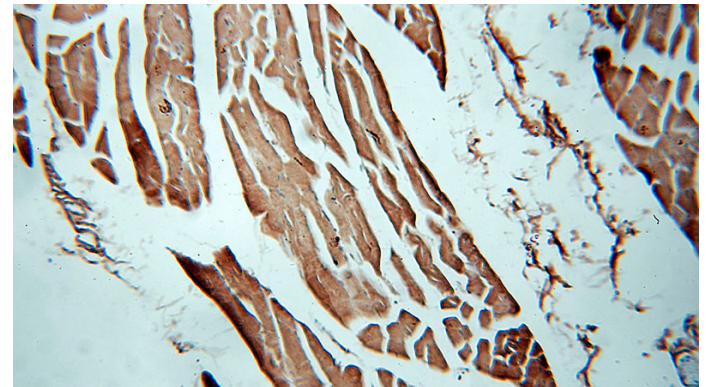
Preparation

This antibody was obtained by immunization of Peptide (Accession Number: NM_001824). Purification method: Antigen affinity purified.

mouse heart tissue were subjected to SDS PAGE followed by western blot with Catalog No:109542(CKM-Specific antibody) at dilution of 1:2000

Formulation

PBS with 0.02% sodium azide and 50% glycerol pH 7.3.



Storage

Store at -20°C. DO NOT ALIQUOT

Clonality

Polyclonal

Ig Type

Rabbit IgG

Immunohistochemical of paraffin-embedded human skeletal muscle using Catalog No:109542(CKM-Specific antibody) at dilution of 1:100 (under 10x lens)

Applications

ELISA, WB, IHC, IF, IP

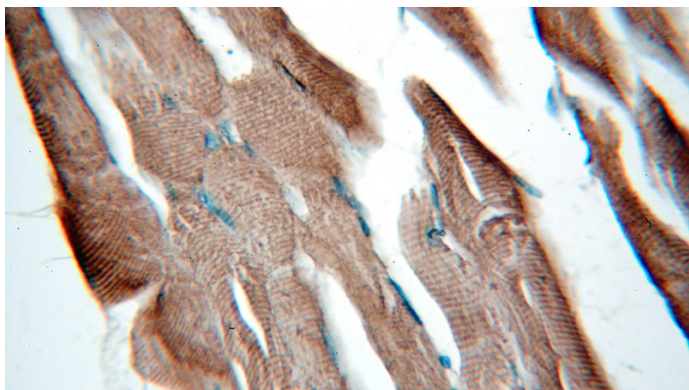
Dilutions

Recommended Dilution:

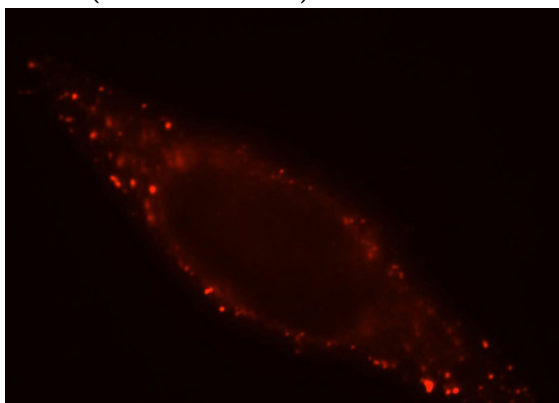
Creatine Kinase M-Specific antibody



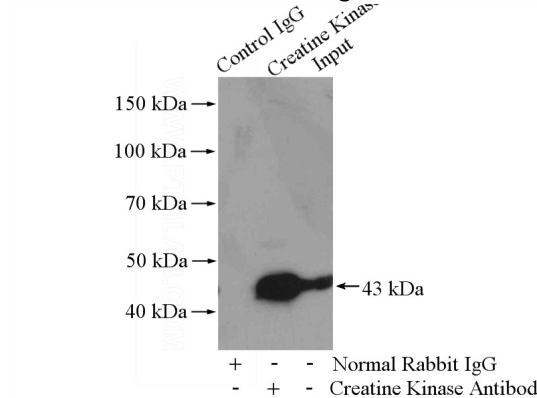
Catalog Number: 109542



Immunohistochemical of paraffin-embedded human skeletal muscle using Catalog No:109542(CKM-Specific antibody) at dilution of 1:100 (under 40x lens)



Immunofluorescent analysis of HepG2 cells, using CKM antibody Catalog No:109542 at 1:25 dilution and Rhodamine-labeled goat anti-rabbit IgG (red).



IP Result of anti-CKM-Specific (IP:Catalog No:109542, 4ug; Detection:Catalog No:109542 1:2000) with mouse brain tissue lysate 4000ug.