

CABLES2 Polyclonal Antibody



Catalog Number: 160542

Product name

CABLES2 Polyclonal Antibody

Specificity

Human, Mouse

Antibody description

Polyclonal antibody to CABLES2

Preparation

Antigen: A synthetic peptide of human CABLES2

Formulation

PBS with 0.02% sodium azide, pH7.3.

Storage

Store at 4°C. Avoid freeze / thaw cycles.

Clonality

Polyclonal

Ig Type

Rabbit IgG

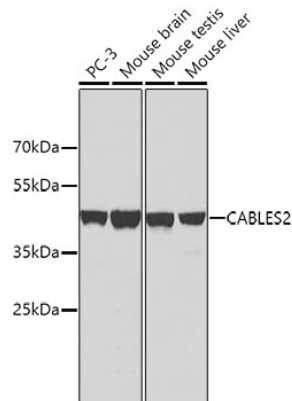
Applications

WB

Dilutions

WB 1:500 - 1:2000

Validations



Western blot - CABLES2 Polyclonal Antibody

Western blot analysis of extracts of various cell lines, using CABLES2 antibody. Secondary antibody: HRP Goat Anti-Rabbit IgG (H+L) at 1:10000 dilution. Lysates/proteins: 25ug per lane. Blocking buffer: 3% nonfat dry milk in TBST.