

Anti-FCRL1/FCRH1 antibody



Catalog Number: 105142

Product name

Anti-FCRL1/FCRH1 antibody

Immunogen

[Mouse FCRL1/FCRH1 \(His Tag\) recombinant protein](#)

Specificity

Mouse FCRL1 / FCRH1

Antibody description

Rabbit polyclonal to FCRL1/FCRH1

Preparation

Produced in rabbits immunized with purified, recombinant Mouse FCRL1 / FCRH1 (rh FCRL1 / FCRH1; Q8R4Y0-2; Met1-Thr204). FCRL1 / FCRH1 specific IgG was purified by Mouse FCRL1 / FCRH1 affinity chromatography.

Formulation

0.2 µm filtered solution in PBS

Storage

This antibody can be stored at 2°C-8°C for one month without detectable loss of activity. Antibody products are stable for twelve months from date of receipt when stored at -20°C to -80°C.

Preservative-Free.

Sodium azide is recommended to avoid contamination (final concentration 0.05%-0.1%). It is toxic to cells and should be disposed of properly. Avoid repeated freeze-thaw cycles.

Clonality

Polyclonal

Ig Type

Rabbit IgG

Applications

ELISA, WB, IP

Dilutions

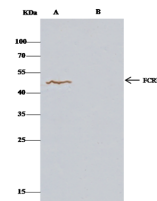
WB: 10-20 µg/mL

ELISA: 0.1-0.2 µg/mL

This antibody can be used at 0.1-0.2 µg/mL with the appropriate secondary reagents to detect Mouse FCRL1 / FCRH1. The detection limit for Mouse FCRL1 / FCRH1 is < 0.039 ng/well.

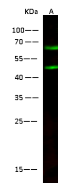
IP: 1-4 µg/mg of lysate

Validations



Items	Lanes	A	B
Sample (whole cell lysate)	HepG2		
Sample quantity	0.5 mg		
IP antibody type	antiFCRL1-His-IP02		Rabbit Blank IgG
IP antibody quantity	2 µg		
Protein G agarose	15 µl of 50% Protein G Agarose		
Gel	13% SDS-PAGE reducing gel		
Primary antibody	antiFCRL1-His antibody at 5 µg/ml		
Secondary antibody	Clon-Block IP Detection Reagent (HRP) at 1:1000 dilution		

FCRL1 / FCRH1 Antibody, Rabbit PAb, Antigen Affinity Purified, Immunoprecipitation



Items	Lanes	A
Sample (whole cell lysate)	HepG2	
Sample Volume (µg/lane)	30	
Gel	13% SDS-PAGE reducing gel	
Recommended concentration	10-20 µg/ml	
Secondary Antibody	Dylight 800 labeled Antibody to Rabbit IgG (HRP), at 1:5000 dilution. Developed using Odyssey imaging system.	
Explanation	Predicted band size: 47 kDa Observed band size: 47 kDa Additional bands at: 65 kDa [46] are unsure as to the identity of these extra bands. They are possible non-specific bindings.	

FCRL1 / FCRH1 Antibody, Rabbit PAb, Antigen Affinity Purified, Western blot