

Mouse KLK7/Kallikrein 7(PRSS6) (His Tag) recombinant protein



Catalog Number: 502142

General Information

Gene Name Synonym

Serine protease 6; Stratum corneum chymotryptic enzyme; Thymopsin

Protein Construction

A DNA sequence encoding the mouse KLK7 (Q91VE3) (Met1-Arg249) was expressed with a C-terminal polyhistidine tag.

Organism

Mouse

Expression Host

Human Cells

QC Testing

Activity

Measured by its ability to cleave the fluorogenic peptide substrate, Mca-RPKPVE-Nval-WRK(Dnp)-NH₂ (AnaSpec, Cat#27114).

The specific activity is >70 pmoles/min/μg.

Purity

> (71.4+26) % as determined by SDS-PAGE

Endotoxin

< 1.0 EU per μg of the protein as determined by the LAL method

Stability

Samples are stable for up to twelve months from date of receipt at -70°C

Predicted N terminal

Gln 22

Molecular Mass

The recombinant mouse KLK7 comprises 239 amino acids and has a predicted molecular mass of 26.5 kDa. The apparent molecular mass of the protein is approximately 31 and 34 kDa in SDS-PAGE under reducing conditions due to glycosylation.

Formulation

Lyophilized from sterile PBS, pH 7.4

1. 5 % trehalose and mannitol are added as protectants before lyophilization.

2. Please contact us for any concerns or special requirements.

Usage Guide

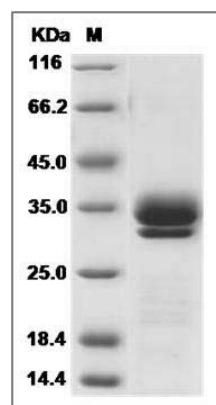
Storage

Store it under sterile conditions at -20°C to -80°C. It is recommended that the protein be aliquoted for optimal storage. Avoid repeated freeze-thaw cycles.

Reconstitution

Adding sterile water, prepare a stock solution of 0.25 mg/ml. Concentration is measured by UV-Vis.

SDS-PAGE



Mouse KLK7 / Kallikrein 7 Protein (His Tag) SDS-PAGE