

CAPSL antibody



Catalog Number: 108842

Product name

CAPSL antibody

IP: 1:200-1:2000

IHC: 1:20-1:200

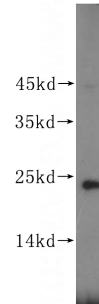
Specificity

Human, Mouse, Rat; other species not tested.

Antibody description

CAPSL Rabbit Polyclonal antibody. Positive IHC detected in human lung cancer tissue. Positive WB detected in mouse lung tissue. Positive IP detected in mouse lung tissue. Observed molecular weight by Western-blot: 24 kDa

Validations



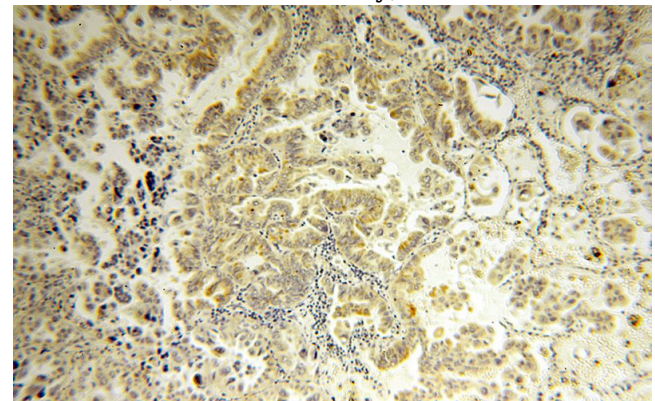
Preparation

This antibody was obtained by immunization of CAPSL recombinant protein (Accession Number: BC017586). Purification method: Antigen affinity purified.

mouse lung tissue were subjected to SDS PAGE followed by western blot with Catalog No:108842(CAPSL antibody) at dilution of 1:800

Formulation

PBS with 0.02% sodium azide and 50% glycerol pH 7.3.



Storage

Store at -20°C. DO NOT ALIQUOT

Clonality

Polyclonal

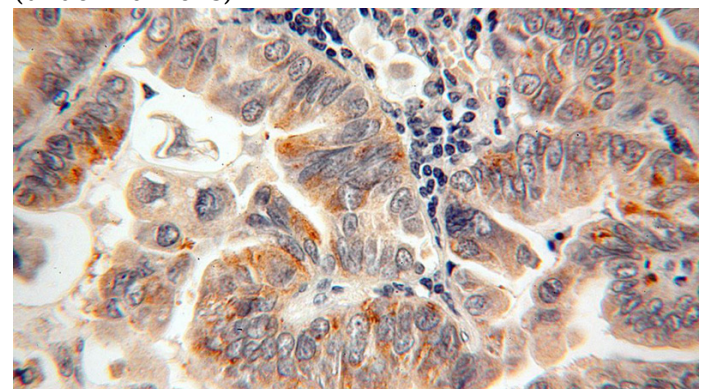
Immunohistochemical of paraffin-embedded human lung cancer using Catalog No:108842(CAPSL antibody) at dilution of 1:100 (under 10x lens)

Ig Type

Rabbit IgG

Applications

ELISA, WB, IHC, IP



Dilutions

Recommended Dilution:

WB: 1:500-1:5000

Immunohistochemical of paraffin-embedded

CAPSL antibody

Catalog Number: 108842

human lung cancer using Catalog No:108842(CAPSL antibody) at dilution of 1:100 (under 40x lens)

IP Result of anti-CAPSL (IP:Catalog No:108842, 4ug; Detection:Catalog No:108842 1:500) with mouse lung tissue lysate 4000ug.

