

# WASF4-Specific antibody



Catalog Number: 116842

## Product name

WASF4-Specific antibody

## Specificity

Human, Mouse; other species not tested.

## Antibody description

WASF4-Specific Rabbit Polyclonal antibody.  
Positive WB detected in mouse brain tissue.  
Positive IF detected in HepG2 cells. Observed  
molecular weight by Western-blot: 68kd

## Preparation

This antibody was obtained by immunization of  
Peptide (Accession Number: Q8IV90). Purification  
method: Antigen affinity purified.

## Formulation

PBS with 0.02% sodium azide and 50% glycerol  
pH 7.3.

## Storage

Store at -20°C. DO NOT ALIQUOT

## Clonality

Polyclonal

## Ig Type

Rabbit IgG

## Applications

ELISA, WB, IF

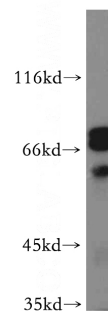
## Dilutions

Recommended Dilution:

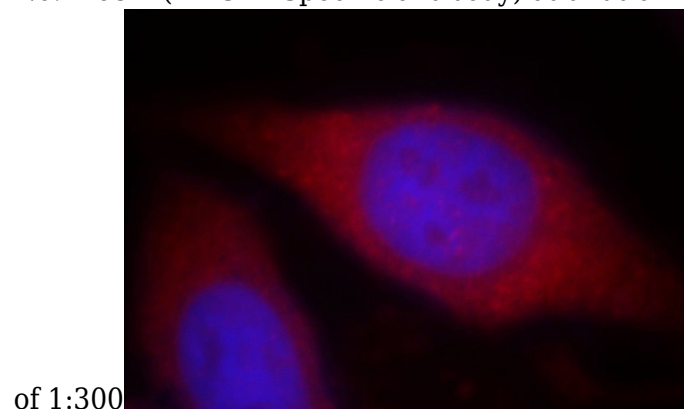
WB: 1:500-1:5000

IF: 1:10-1:100

## Validations



mouse brain tissue were subjected to SDS PAGE  
followed by western blot with Catalog  
No:116842(WASF4-Specific antibody) at dilution



of 1:300  
Immunofluorescent analysis of HepG2 cells, using  
WASF4 antibody Catalog No:116842 at 1:25  
dilution and Rhodamine-labeled goat anti-rabbit  
IgG (red). Blue pseudocolor = DAPI (fluorescent  
DNA dye).