

Anti-Phospho-c-Myc (Ser62) Rabbit antibody



Catalog Number: 166842

Product name

Anti-Phospho-c-Myc (Ser62) Rabbit antibody

Specificity

Human, Mouse, Rat

Antibody description

Phospho-c-Myc (Ser62) Rabbit polyclonal antibody

Preparation

Antigen: A synthesized peptide derived from human Phospho-c-Myc (S62)

Formulation

Rabbit IgG in phosphate buffered saline , pH 7.4, 150mM NaCl, 0.02% sodium azide and 50% glycerol.

Storage

Store at 4°C short term. Store at -20°C long term. Avoid freeze / thaw cycle.

Clonality

Polyclonal

Ig Type

Rabbit IgG

Applications

WB, IHC-P, ICC/IF, IP

Dilutions

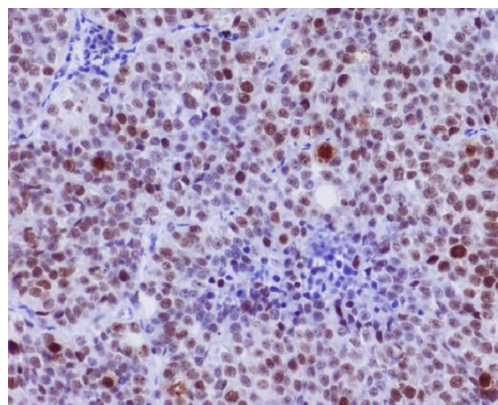
WB: 1/500-1/2000

IHC: 1/50-1/200

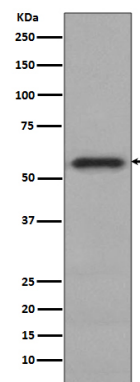
ICC/IF: 100-1/500

IP: 1/50

Validations



Immunohistochemical analysis of paraffin-embedded human lung carcinoma, using Phospho-



c-Myc (S62) Antibody .

Western blot analysis of Phospho-c-Myc (S62) expression in HeLa cell lysate.