

# TAK1 antibody

Catalog Number: 115842

## Product name

TAK1 antibody

## Specificity

Human, hamster, Mouse; other species not tested.

## Antibody description

TAK1 Rabbit Polyclonal antibody. Positive WB detected in CHO cells, A2780 cells, A375 cells, A431 cells, COLO 320 cells, HeLa cells, K-562 cells, MCF7 cells, mouse heart tissue, SKOV-3 cells. Positive IHC detected in human prostate cancer tissue. Observed molecular weight by Western-blot: 64 kDa

## Preparation

This antibody was obtained by immunization of TAK1 recombinant protein (Accession Number: NM\_003188). Purification method: Antigen affinity purified.

## Formulation

PBS with 0.1% sodium azide and 50% glycerol pH 7.3.

## Storage

Store at -20°C. DO NOT ALIQUOT

## Clonality

Polyclonal

## Ig Type

Rabbit IgG

## Applications

ELISA, IHC, WB

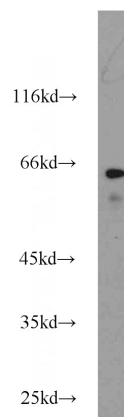
## Dilutions

Recommended Dilution:

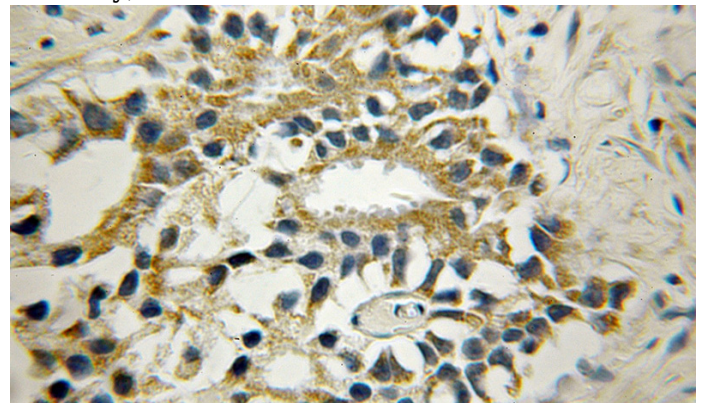
WB: 1:500-1:5000

IHC: 1:20-1:200

## Validations



CHO cells were subjected to SDS PAGE followed by western blot with Catalog No:115842(MAP3K7 antibody) at dilution of 1:1000



Immunohistochemical of paraffin-embedded human prostate cancer using Catalog No:115842(MAP3K7 antibody) at dilution of 1:50 (under 10x lens)