

# IRF9 antibody



Catalog Number: 111842

## Product name

IRF9 antibody

IP: 1:200-1:2000

IHC: 1:20-1:200

## Specificity

Human, Mouse, Rat; other species not tested.

IF: 1:20-1:200

## Antibody description

IRF9 Rabbit Polyclonal antibody. Positive WB detected in mouse heart tissue, rat heart tissue. Positive IP detected in mouse heart tissue. Positive IF detected in HepG2 cells. Positive IHC detected in human cervical cancer tissue. Observed molecular weight by Western-blot: 48kd

## Preparation

This antibody was obtained by immunization of IRF9 recombinant protein (Accession Number: NM\_006084). Purification method: Antigen affinity purified.

## Formulation

PBS with 0.02% sodium azide and 50% glycerol pH 7.3.

## Storage

Store at -20°C. DO NOT ALIQUOT

## Clonality

Polyclonal

## Ig Type

Rabbit IgG

## Applications

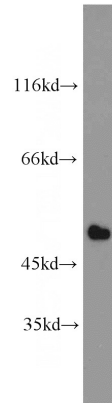
ELISA, WB, IHC, IF, IP

## Dilutions

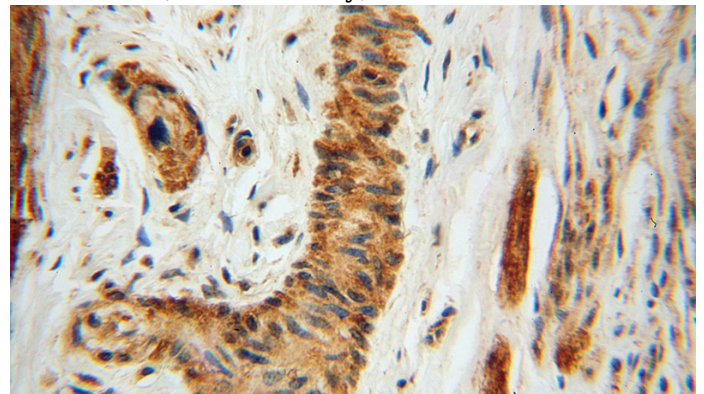
Recommended Dilution:

WB: 1:200-1:2000

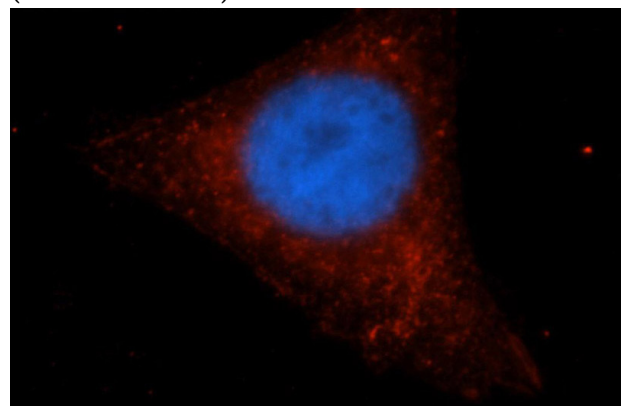
## Validations



mouse heart tissue were subjected to SDS PAGE followed by western blot with Catalog No:111842(IRF9 antibody) at dilution of 1:500



Immunohistochemical of paraffin-embedded human cervical cancer using Catalog No:111842(IRF9 antibody) at dilution of 1:50 (under 40x lens)

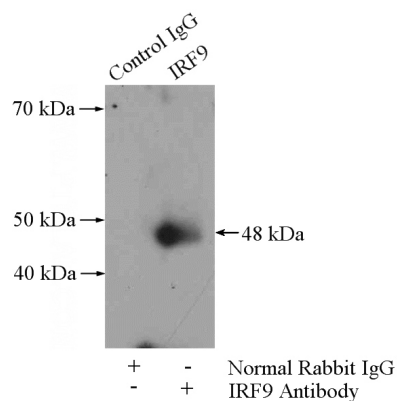


# IRF9 antibody

Catalog Number: 111842

---

Immunofluorescent analysis of HepG2 cells, using IRF9 antibody Catalog No:111842 at 1:50 dilution and Rhodamine-labeled goat anti-rabbit IgG (red). Blue pseudocolor = DAPI (fluorescent DNA dye).



IP Result of anti-IRF9 (IP:Catalog No:111842, 4ug; Detection:Catalog No:111842 1:500) with mouse heart tissue lysate 3200ug.