

SNAI2 antibody



Catalog Number: 115442

Product name

SNAI2 antibody

Specificity

Human, Mouse, Rat; other species not tested.

Antibody description

SNAI2 Rabbit Polyclonal antibody. Positive WB detected in mouse pancreas tissue, HepG2 cells. Positive IHC detected in human kidney tissue. Observed molecular weight by Western-blot: 30 kDa

Preparation

This antibody was obtained by immunization of SNAI2 recombinant protein (Accession Number: NM_003068). Purification method: Antigen affinity purified.

Formulation

PBS with 0.1% sodium azide and 50% glycerol pH 7.3.

Storage

Store at -20°C. DO NOT ALIQUOT

Clonality

Polyclonal

Ig Type

Rabbit IgG

Applications

ELISA, WB, IHC

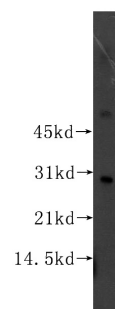
Dilutions

Recommended Dilution:

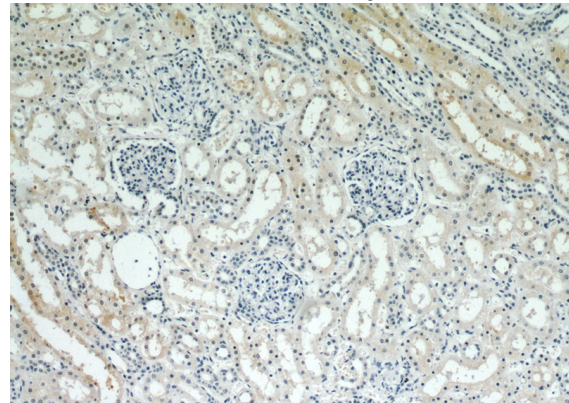
WB: 1:200-1:1000

IHC: 1:20-1:200

Validations



mouse pancreas tissue were subjected to SDS PAGE followed by western blot with Catalog No:115442(SNAI2 antibody) at dilution of 1:300



Immunohistochemical of paraffin-embedded human kidney using Catalog No:115442(SNAI2 antibody) at dilution of 1:200 (under 10x lens)