

RAB3C antibody

Catalog Number: 114442

Product name

RAB3C antibody

IP: 1:200-1:1000

IHC: 1:20-1:200

Specificity

Human, Mouse; other species not tested.

Antibody description

RAB3C Rabbit Polyclonal antibody. Positive IHC detected in human ovary tumor tissue. Positive IP detected in mouse brain tissue. Positive WB detected in mouse lung tissue, human brain tissue, mouse brain tissue. Observed molecular weight by Western-blot: 28 kDa

Preparation

This antibody was obtained by immunization of RAB3C recombinant protein (Accession Number: NM_138453). Purification method: Antigen affinity purified.

Formulation

PBS with 0.1% sodium azide and 50% glycerol pH 7.3.

Storage

Store at -20°C. DO NOT ALIQUOT

Clonality

Polyclonal

Ig Type

Rabbit IgG

Applications

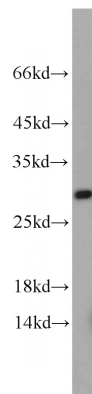
ELISA, WB, IHC, IP

Dilutions

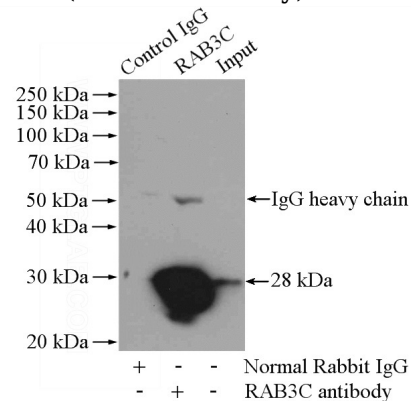
Recommended Dilution:

WB: 1:200-1:2000

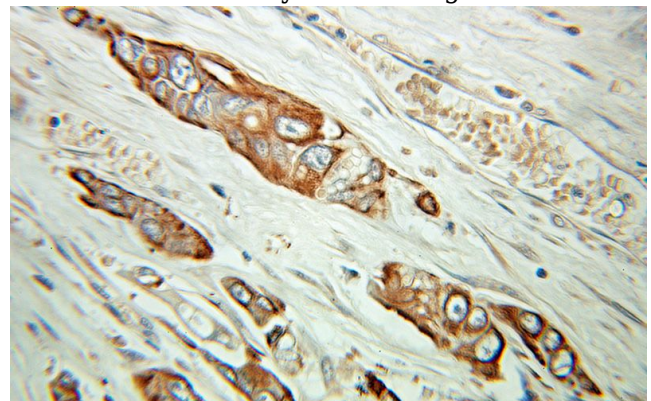
Validations



mouse lung tissue were subjected to SDS PAGE followed by western blot with Catalog No:114442(RAB3C antibody) at dilution of 1:1000



IP Result of anti-RAB3C (IP:Catalog No:114442, 4ug; Detection:Catalog No:114442 1:300) with mouse brain tissue lysate 4000ug.



Immunohistochemical of paraffin-embedded human ovary tumor using Catalog

RAB3C antibody



Catalog Number: 114442

No:114442(RAB3C antibody) at dilution of 1:100 (under 10x lens)