

## General Information

### Gene Name Synonym

Osteoclast inhibitory lectin

### Protein Construction

A DNA sequence encoding the rat CLEC2D (NP\_569086.1) (Lys98-Leu233) was expressed with Fc region of human IgG1 at the N-terminus.

### Organism

Rat

### Expression Host

Human Cells

## QC Testing

### Purity

(76.7+14.8) % as determined by SDS-PAGE

### Endotoxin

< 1.0 EU per µg of the protein as determined by the LAL method

### Stability

Samples are stable for up to twelve months from date of receipt at -70°C

### Predicted N terminal

Glu

### Molecular Mass

The recombinant rat CLEC2D comprises 396

amino acids and predicts a molecular mass of 44 kDa. The apparent molecular mass of the recombinant protein is approximately 44-54 and 36 kDa in SDS-PAGE under reducing conditions due to glycosylation.

### Formulation

Lyophilized from sterile PBS, pH 7.4.

1. 5 % trehalose and mannitol are added as protectants before lyophilization.

2. Please contact us for any concerns or special requirements.

## Usage Guide

### Storage

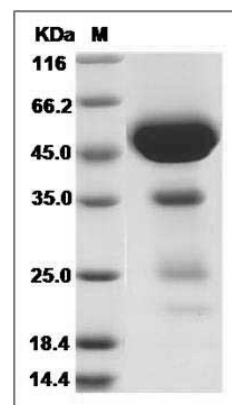
Store it under sterile conditions at -20°C to -80°C.

It is recommended that the protein be aliquoted for optimal storage. Avoid repeated freeze-thaw cycles.

### Reconstitution

Adding sterile water, prepare a stock solution of 0.25 mg/ml. Concentration is measured by UV-Vis.

### SDS-PAGE



Rat CLEC2D / OCIL Protein (Fc Tag) SDS-PAGE