

APPL1 antibody

Catalog Number: 108042

Product name

APPL1 antibody

IP: 1:200-1:2000

IHC: 1:20-1:200

Specificity

Human,Mouse,Rat; other species not tested.

Antibody description

APPL1 Rabbit Polyclonal antibody. Positive IHC detected in human ovary tumor tissue. Positive IP detected in mouse brain tissue. Positive WB detected in human brain tissue, mouse ovary tissue. Observed molecular weight by Western-blot: 80kd

Preparation

This antibody was obtained by immunization of APPL1 recombinant protein (Accession Number: NM_012096). Purification method: Antigen affinity purified.

Formulation

PBS with 0.1% sodium azide and 50% glycerol pH 7.3.

Storage

Store at -20°C. DO NOT ALIQUOT

Clonality

Polyclonal

Ig Type

Rabbit IgG

Applications

ELISA, WB, IHC, IP

Dilutions

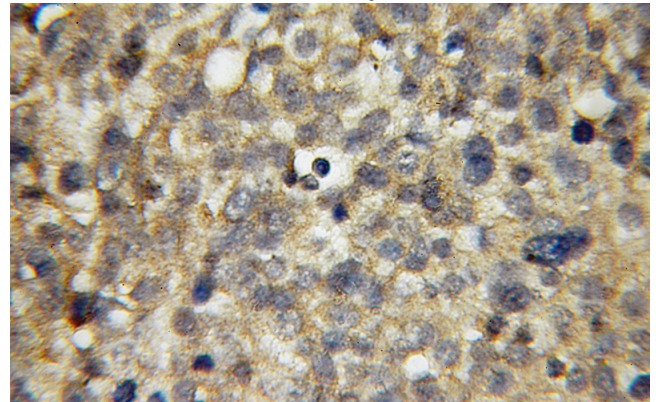
Recommended Dilution:

WB: 1:500-1:5000

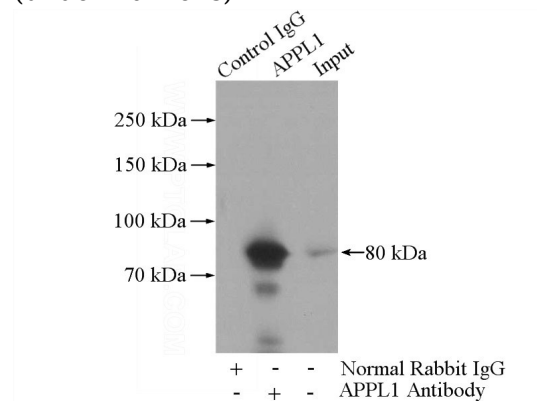
Validations



human brain tissue were subjected to SDS PAGE followed by western blot with Catalog No:108042(APPL1 antibody) at dilution of 1:500



Immunohistochemical of paraffin-embedded human ovary tumor using Catalog No:108042(APPL1 antibody) at dilution of 1:50 (under 10x lens)



IP Result of anti-APPL1 (IP:Catalog No:108042,

APPL1 antibody



Catalog Number: 108042

4ug; Detection:Catalog No:108042 1:500) with mouse brain tissue lysate 4000ug.