

# SAE1 antibody



Catalog Number: 115042

## Product name

SAE1 antibody

WB: 1:200-1:1000

IHC: 1:20-1:200

## Specificity

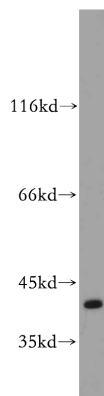
Human, Mouse, Rat; other species not tested.

IF: 1:20-1:200

## Antibody description

SAE1 Rabbit Polyclonal antibody. Positive WB detected in A431 cells, A549 cells, COLO 320 cells, HEK-293 cells, HeLa cells. Positive IF detected in HeLa cells. Positive IHC detected in human colon cancer tissue, human skin cancer tissue. Observed molecular weight by Western-blot: 38 kDa

## Validations



## Preparation

This antibody was obtained by immunization of SAE1 recombinant protein (Accession Number: NM\_005500). Purification method: Antigen affinity purified.

A431 cells were subjected to SDS PAGE followed by western blot with Catalog No:115042(SAE1 antibody) at dilution of 1:300

## Formulation

PBS with 0.1% sodium azide and 50% glycerol pH 7.3.

## Storage

Store at -20°C. DO NOT ALIQUOT

## Clonality

Polyclonal

## Ig Type

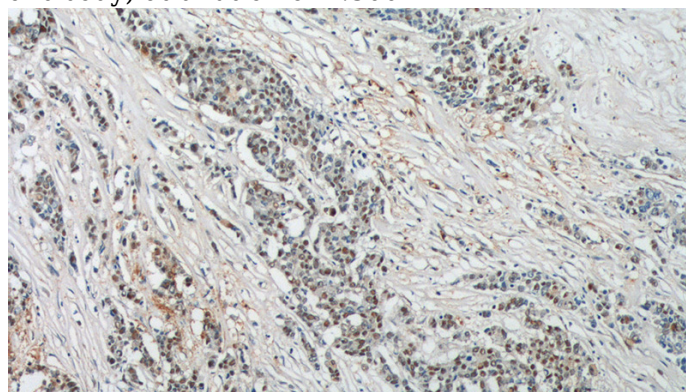
Rabbit IgG

## Applications

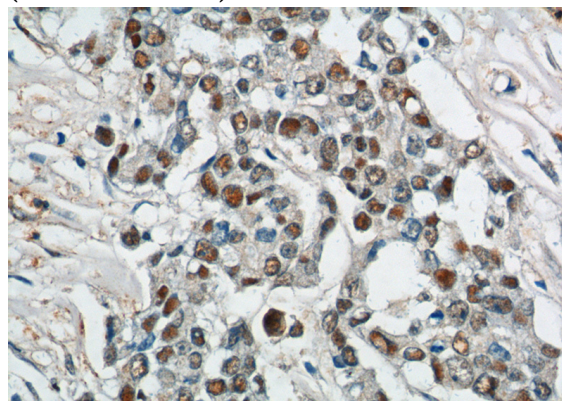
ELISA, WB, IF, IHC

## Dilutions

Recommended Dilution:



Immunohistochemistry of paraffin-embedded human colon cancer tissue slide using Catalog No:115042(SAE1 Antibody) at dilution of 1:200 (under 10x lens).



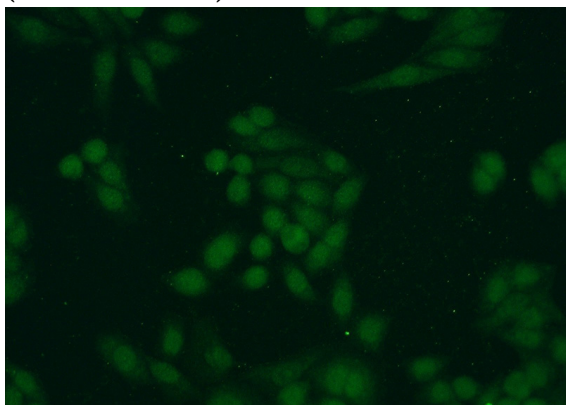
# SAE1 antibody



Catalog Number: 115042

---

Immunohistochemistry of paraffin-embedded human colon cancer tissue slide using Catalog No:115042(SAE1 Antibody) at dilution of 1:200 (under 40x lens).



Immunofluorescent analysis of HeLa cells using Catalog No:115042(SAE1 Antibody) at dilution of 1:50 and Alexa Fluor 488-conjugated AffiniPure Goat Anti-Rabbit IgG(H+L)