

Anti-TUBE1 antibody

Catalog Number: 175042

Product name

Anti-TUBE1 antibody

Specificity

Human

Antibody description

Mouse monoclonal antibody to TUBE1

Preparation

This antigen of this antibody was recombinant protein

Formulation

Liquid, 1*TBS (pH7.4), 1%BSA, 40%Glycerol.
Preservative: 0.05% Sodium Azide.

Storage

Store at +4°C after thawing. Aliquot store at -20°C or -80°C. Avoid repeated freeze / thaw cycles.

Clonality

Monoclonal

Ig Type

Mouse IgG1

Applications

WB, IHC-P, FC

Dilutions

WB: 1:500-1:2,000

IHC-P: 1:50-1:200

FC: 1:50-1:100

Validations

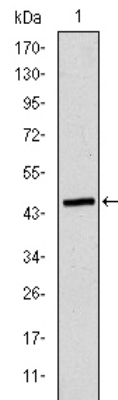
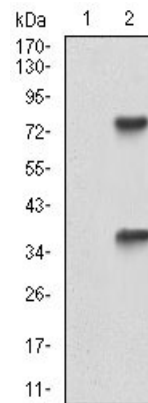
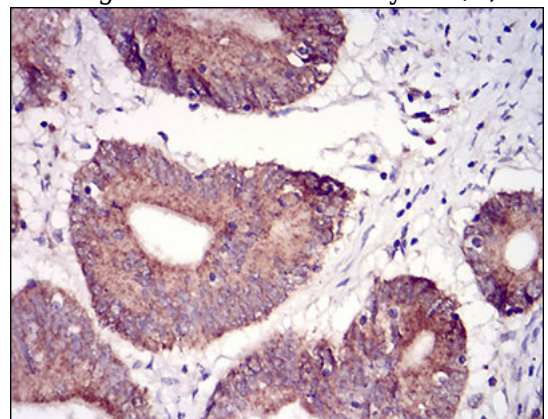


Fig1: Western blot analysis of TUBE1 on human TUBE1 recombinant protein using anti-TUBE1 antibody at 1/1,000 dilution.



antibody at 1/1,000 dilution.

Fig2: Western blot analysis of TUBE1 on HEK293 (1) and TUBE1-hIgGfc transfected HEK293 (2) cell lysate using anti-TUBE1 antibody at 1/1,000 dilution.



dilution.

Fig3: Immunohistochemical analysis of paraffin-embedded human colon cancer tissue using anti-TUBE1 antibody. Counter stained with hematoxylin.

Anti-TUBE1 antibody

Catalog Number: 175042

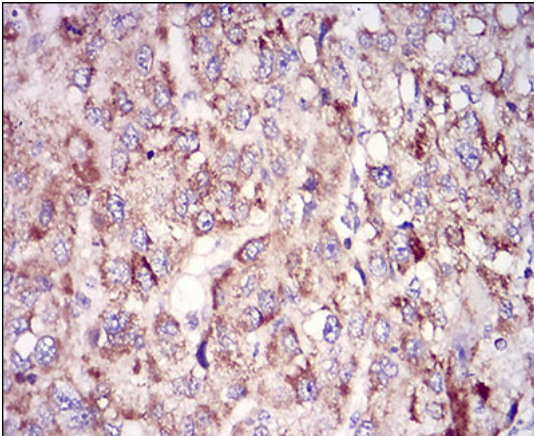


Fig4: Immunohistochemical analysis of paraffin-embedded human liver cancer tissue using anti-TUBE1 antibody. Counter stained with

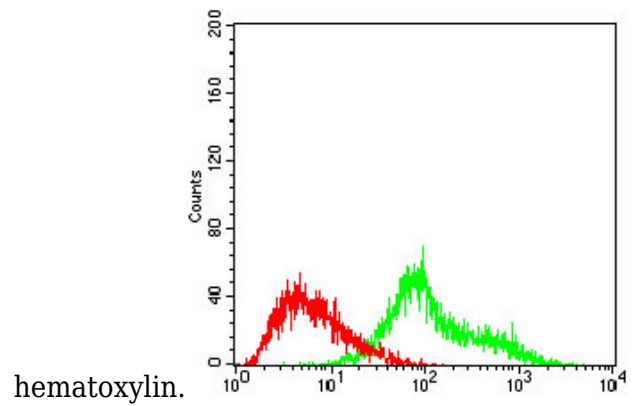


Fig5: Flow cytometric analysis of HeLa cells with TUBE1 antibody at 1/100 dilution (green) compared with an unlabelled control (cells without incubation with primary antibody; red).