

# POLR2F antibody

Catalog Number: 114042

## Product name

POLR2F antibody

IHC: 1:20-1:200

IF: 1:10-1:100

## Specificity

Human, Mouse, Rat; other species not tested.

## Antibody description

POLR2F Rabbit Polyclonal antibody. Positive IF detected in MCF-7 cells. Positive IHC detected in human cervical cancer tissue, human placenta tissue. Positive WB detected in HeLa cells. Observed molecular weight by Western-blot: 14kd

## Preparation

This antibody was obtained by immunization of POLR2F recombinant protein (Accession Number: NM\_021974). Purification method: Antigen affinity purified.

## Formulation

PBS with 0.02% sodium azide and 50% glycerol pH 7.3.

## Storage

Store at -20°C. DO NOT ALIQUOT

## Clonality

Polyclonal

## Ig Type

Rabbit IgG

## Applications

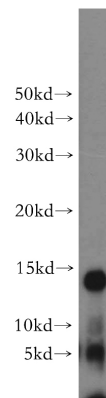
ELISA, WB, IF, IHC

## Dilutions

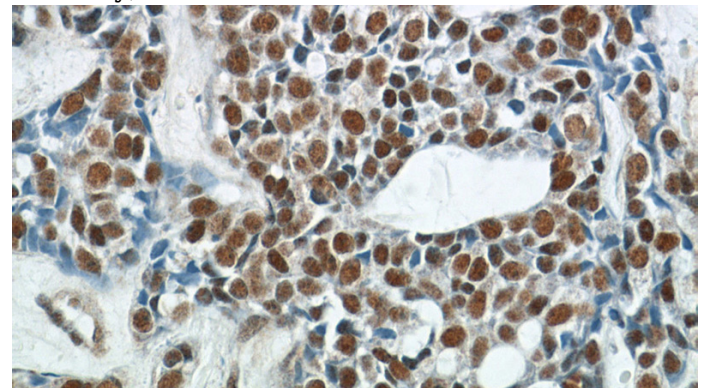
Recommended Dilution:

WB: 1:1000-1:10000

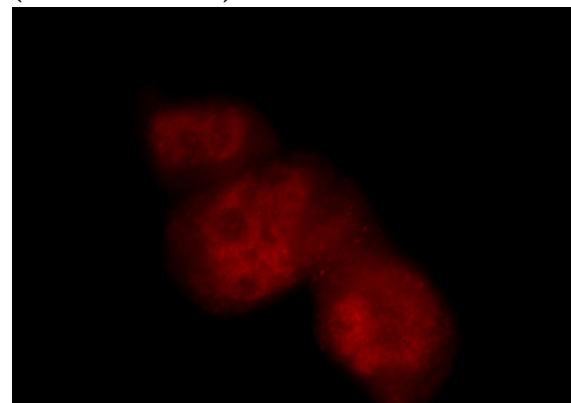
## Validations



HeLa cells were subjected to SDS PAGE followed by western blot with Catalog No:114042(POLR2F antibody) at dilution of 1:500



Immunohistochemistry of paraffin-embedded human cervical cancer tissue slide using Catalog No:114042(POLR2F Antibody) at dilution of 1:200 (under 40x lens)



Immunofluorescent analysis of MCF-7 cells, using

# POLR2F antibody



Catalog Number: 114042

---

POLR2F antibody Catalog No:114042 at 1:25

dilution and Rhodamine-labeled goat anti-rabbit  
IgG (red).