

# PTOV1 Polyclonal Antibody



Catalog Number: 163042

## Product name

PTOV1 Polyclonal Antibody

## Specificity

Human

## Antibody description

Polyclonal antibody to PTOV1

## Preparation

Antigen: A synthetic peptide corresponding to a sequence within amino acids 1-100 of human PTOV1 (NP\_001292037.1).

## Formulation

PBS with 0.02% sodium azide, 50% glycerol, pH7.3.

## Storage

Store at -20°C. Avoid freeze / thaw cycles.

## Clonality

Polyclonal

## Ig Type

Rabbit IgG

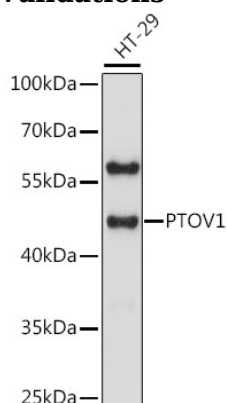
## Applications

WB

## Dilutions

WB 1:500 - 1:2000

## Validations



Western blot - PTOV1 Polyclonal Antibody

Western blot analysis of extracts of HT-29 cells, using PTOV1 antibody at 1:1000 dilution. Secondary antibody: HRP Goat Anti-Rabbit IgG (H+L) at 1:10000 dilution. Lysates/proteins: 25ug per lane. Blocking buffer: 3% nonfat dry milk in TBST. Detection: ECL Basic Kit. Exposure time: 10s.