

# SN-38 Monoclonal Antibody



Catalog Number: 176732

## Product name

SN-38 Monoclonal Antibody

## Specificity

Chemical

## Antibody description

Product has been tested in direct ELISA.

## Preparation

SN-38 conjugated with BSA. Protein G affinity purified

## Formulation

PBS(pH7.4), lyophilized. **Reconstitution: Adding sterile water, prepare a stock solution of 2.0 mg/ml.**

## Storage

Store at -20°C. Avoid freeze / thaw cycles.

## Clonality

Monoclonal

## Ig Type

Mouse IgG1,  $\kappa$

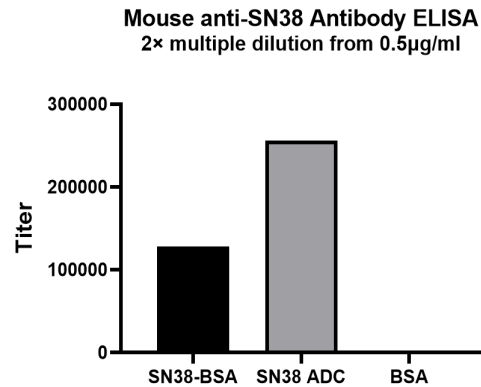
## Applications

ELISA

## Dilutions

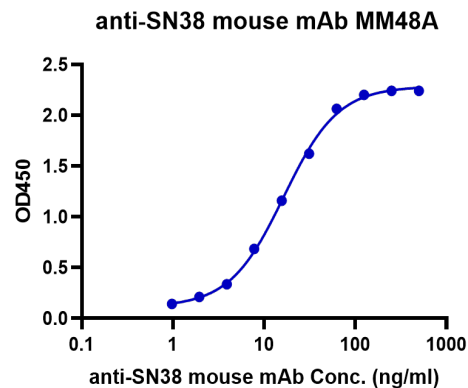
ELISA: 1:5,000-1:20,000

## Validations



ELISA Binding Assay of Anti-SN-38 Antibody to different proteins.

ELISA analysis of Anti-SN38 Monoclonal Antibody with SN-38 -BSA, SN-38 ADC and BSA. Anti-SN-38 Monoclonal Antibody can bind to SN-38-BSA or SN-38 ADC but not carrier protein.



ELISA Binding Assay of Anti-SN-38 Antibody

Immobilized SN-38 ADC at 2 $\mu$ g/ mL (100 $\mu$ L/well) can bind anti-SN-38 mouse monoclonal antibody.