

# Anti-SRFBP1 (p49/STRAP) antibody



Catalog Number: 106732

## Product name

Anti-SRFBP1 (p49/STRAP) antibody

## Immunogen

[Human SRFBP1 \(p49/STRAP\) \(His & GST Tag\) recombinant protein](#)

## Specificity

Human SRFBP1 (p49 / STRAP)

## Antibody description

Rabbit polyclonal to SRFBP1 (p49/STRAP)

## Preparation

Produced in rabbits immunized with purified, recombinant Human SRFBP1 (p49 / STRAP) (rh SRFBP1 (p49 / STRAP); Q8NEF9; Met1-Asp429). SRFBP1 (p49 / STRAP) specific IgG was purified by Human SRFBP1 (p49 / STRAP) affinity chromatography.

## Formulation

0.2 µm filtered solution in PBS

## Storage

This antibody can be stored at 2°C-8°C for one month without detectable loss of activity. Antibody products are stable for twelve months from date of receipt when stored at -20°C to -80°C. Preservative-Free.

Sodium azide is recommended to avoid contamination (final concentration 0.05%-0.1%). It is toxic to cells and should be disposed of properly. Avoid repeated freeze-thaw cycles.

## Clonality

Polyclonal

## Ig Type

Rabbit IgG

## Applications

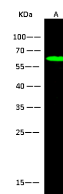
WB, IP

## Dilutions

WB: 5-10 µg/ml

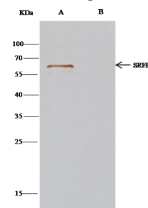
IP: 1-4 µg/mg of lysate

## Validations



Lanes		A
Items		HeLa
Sample (whole cell lysate)		HeLa
Sample Volume (µg/lane)		30
Gel		13% SDS-PAGE reducing gel
Recommended concentration		5-10 µg/ml
Secondary Antibody		Dylight 800-labeled Antibody To Rabbit IgG (H+L), at 1:5000 dilution.
Developed using Odyssey imaging system.		
Explanation		Predicted band size : 47 kDa Observed band size : 68 kDa

SRFBP1 (p49 / STRAP) Antibody, Rabbit PAb, Antigen Affinity Purified, Western blot



Lanes			A	B
Items			HepG2	HepG2
Sample (whole cell lysate)			HepG2	HepG2
Sample quantity			0.5 mg	0.5 mg
IP antibody type			SRFBP1-IP02	Rabbit Blank IgG
IP antibody quantity			2 µg	2 µg
Protein G agarose			15 µl of 50% Protein G Agarose	15 µl of 50% Protein G Agarose
Gel			13% SDS-PAGE reducing gel	13% SDS-PAGE reducing gel
Primary antibody			SRFBP1 antibody at 10 µg/ml	SRFBP1 antibody at 10 µg/ml
Secondary antibody			Clon-Plus IP Detection Reagent (HRP) at 1:1000 dilution.	Clon-Plus IP Detection Reagent (HRP) at 1:1000 dilution.

SRFBP1 (p49 / STRAP) Antibody, Rabbit PAb, Antigen Affinity Purified, Immunoprecipitation