

# STOML3 antibody



Catalog Number: 115732

## Product name

STOML3 antibody

## Clonality

Polyclonal

## Immunogen

[Human STOML3 Recombinant protein \(His tag\)](#)

## Ig Type

Rabbit IgG

## Specificity

human, mouse, rat; other species not tested.

## Applications

ELISA, WB

## Antibody description

STOML3 Rabbit Polyclonal antibody. Positive WB detected in HeLa cells, MCF7 cells, SH-SY5Y cells. Observed molecular weight by Western-blot: 30kd

## Dilutions

Recommended Dilution:  
WB: 1:500-1:5000

## Preparation

This antibody was obtained by immunization of STOML3 recombinant protein (Accession Number: NM\_145286). Purification method: Antigen affinity purified.

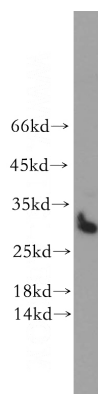
## Formulation

PBS with 0.02% sodium azide and 50% glycerol pH 7.3.

## Storage

Store at -20°C. DO NOT ALIQUOT

## Validations



HeLa cells were subjected to SDS PAGE followed by western blot with Catalog No:115732(STOML3 antibody) at dilution of 1:500