

# MOK antibody

Catalog Number: 112732

## Product name

MOK antibody

IHC: 1:20-1:200

IF: 1:50-1:500

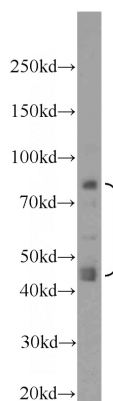
## Specificity

Human; other species not tested.

## Validations

## Antibody description

MOK Rabbit Polyclonal antibody. Positive WB detected in HeLa cells, HepG2 cells. Positive FC detected in HeLa cells. Positive IHC detected in human hepat°Cirrhosis tissue, human heart tissue. Positive IF detected in HeLa cells. Observed molecular weight by Western-blot: 42 kDa,85 kDa



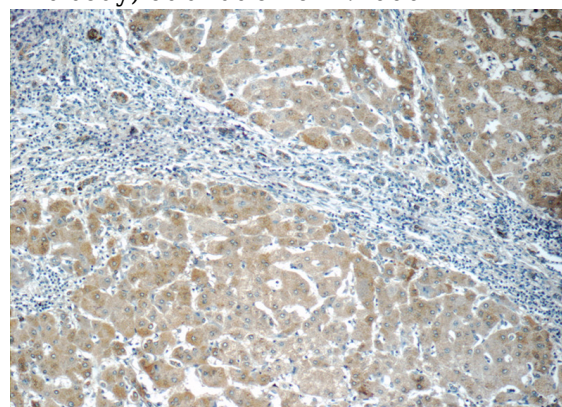
## Preparation

This antibody was obtained by immunization of MOK recombinant protein (Accession Number: BC053536). Purification method: Antigen Affinity purified.

HeLa cells were subjected to SDS PAGE followed by western blot with Catalog No:112732(RAGE Antibody) at dilution of 1:1000

## Formulation

PBS with 0.02% sodium azide and 50% glycerol pH 7.3.



## Storage

Store at -20°C. DO NOT ALIQUOT

## Clonality

Polyclonal

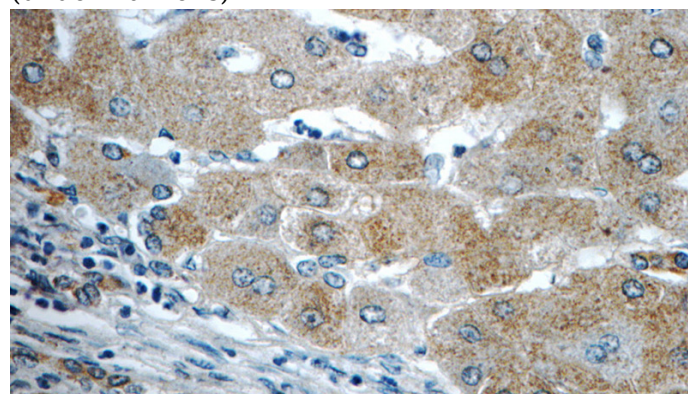
Immunohistochemistry of paraffin-embedded human hepatocirrhosis tissue slide using Catalog No:112732(RAGE Antibody) at dilution of 1:50 (under 10x lens)

## Ig Type

Rabbit IgG

## Applications

ELISA, WB, IHC, IF, FC



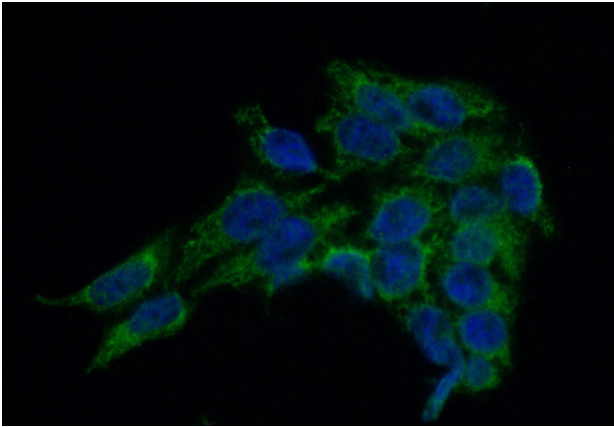
## Dilutions

Recommended Dilution:

WB: 1:500-1:5000

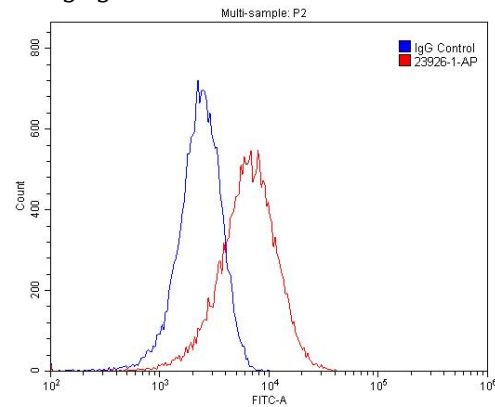
Immunohistochemistry of paraffin-embedded

human hepatocirrhosis tissue slide using Catalog No:112732(RAGE Antibody) at dilution of 1:50 (under 40x lens)



Immunofluorescent analysis of (-20oc Ethanol) fixed HeLa cells using Catalog No:112732(RAGE Antibody) at dilution of 1:50 and Alexa Fluor 488-

conjugated AffiniPure Goat Anti-Rabbit IgG(H+L)



1X10<sup>6</sup> HeLa cells were stained with 0.2ug RAGE antibody (Catalog No:112732, red) and control antibody (blue). Fixed with 4% PFA blocked with 3% BSA (30 min). Alexa Fluor 488-conjugated AffiniPure Goat Anti-Rabbit IgG(H+L) with dilution 1:1500.