

# Anti-PPM1A antibody



Catalog Number: 141732

## Product name

Anti-PPM1A antibody

## Immunogen

[Mouse PPM1A/PP2CA \(His Tag\) recombinant protein](#)

## Specificity

Mouse PPM1A / PP2CA

## Antibody description

Rabbit Monoclonal to Mouse PPM1A

## Preparation

This antibody was obtained from a rabbit immunized with purified, recombinant Mouse PPM1A / PP2CA .

## Formulation

0.2 µm filtered solution in PBS

## Storage

This antibody can be stored at 2°C-8°C for one month without detectable loss of activity. Antibody products are stable for twelve months from date of receipt when stored at -20°C to -80°C.

Preservative-Free.

Sodium azide is recommended to avoid

contamination (final concentration 0.05%-0.1%). It is toxic to cells and should be disposed of properly. Avoid repeated freeze-thaw cycles.

## Clonality

Monoclonal

## Ig Type

Rabbit IgG

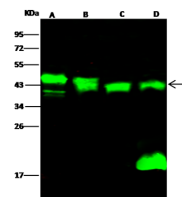
## Applications

WB

## Dilutions

WB: 1-5 µg/ml

## Validations



Items	Lanes	A	B	C	D
Sample		Jurkat (whole cell lysate)	MCF7 (whole cell lysate)	SKBR3 (whole cell lysate)	Mouse brain tissue lysate
Sample Volume (µg/lane)		30	30	30	30
Gel	13% SDS-PAGE reducing gel				
Recommended Concentration	1-5 µg/ml				
Secondary Antibody	Dylight 800-labeled Antibody To Rabbit IgG (H+L), at 1:5000 dilution. Developed using Odyssey imaging system.				
Explanation	Predicted band size : 42 kDa Observed band size : 45 kDa Additional bands at : 18 kDa (We are unsure as to the identity of these extra bands.)				

PPM1A / PP2CA Antibody, Rabbit MAb, Western blot