

Anti-LMO2 Rabbit antibody



Catalog Number: 167332

Product name

Anti-LMO2 Rabbit antibody

Specificity

Human, Mouse, Rat

Antibody description

LMO2 Rabbit polyclonal antibody

Preparation

Antigen: A synthetic peptide of human LMO2

Formulation

Supplied in 50nM Tris-Glycine(pH 7.4), 0.15M NaCl, 40%Glycerol, 0.01% sodium azide and 0.05% BSA.

Storage

Store at -20°C. Stable for 12 months from date of receipt.

Clonality

Polyclonal

Ig Type

Rabbit IgG

Applications

WB, FC, IP

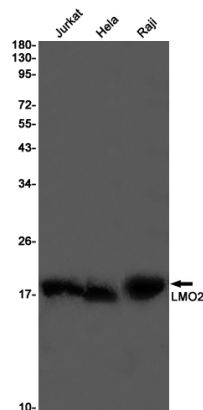
Dilutions

WB: 1/1000-1/5000

FC: 1/20-1/100

IP: 1/20-1/100

Validations



Western blot detection of LMO2 in Jurkat, HeLa, Raji cell lysates using LMO2 Rabbit pAb(1:1000 diluted). Predicted band size: 18KDa. Observed band size: 18KDa.