

# Anti-CoV Spike glycoprotein antibody



Catalog Number: 104332

## Product name

Anti-CoV Spike glycoprotein antibody

## Specificity

The antibody reacts with S1 subunit of MERS-CoV (NCoV / Novel coronavirus) Spike protein (S protein) and full-length S protein

## Antibody description

Rabbit polyclonal to CoV Spike glycoprotein

## Preparation

Produced in rabbits immunized with purified, a synthetic peptide corresponding to the center region of the S1 subunit of MERS-CoV (NCoV / Novel coronavirus) spike glycoprotein (S protein), and purified by antigen affinity chromatography.

## Formulation

0.2 µm filtered solution in PBS with 5% trehalose

## Storage

This antibody can be stored at 2°C-8°C for one month without detectable loss of activity. Antibody products are stable for twelve months from date of receipt when stored at -20°C to -80°C.

Preservative-Free.

Sodium azide is recommended to avoid contamination (final concentration 0.05%-0.1%). It is toxic to cells and should be disposed of properly. Avoid repeated freeze-thaw cycles.

## Clonality

Polyclonal

## Ig Type

Rabbit IgG

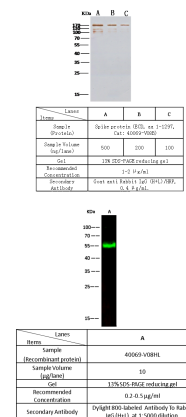
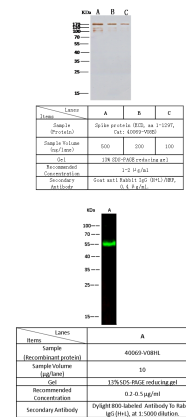
## Applications

ELISA, WB, IF, IP

## Dilutions

WB: 0.2-2 µg/mL

## Validations



Anti-Novel coronavirus (HCoV-EMC/2012) Spike Protein S1 Antibody, Rabbit PAb, Antigen Affinity Purified, Western blot