

# Human S100A4 (Fc Tag) recombinant protein



Catalog Number: 503332

## General Information

### Gene Name Synonym

Calvasculin; Metastasin; Placental calcium-binding protein; Protein Mts1; S100 calcium-binding protein A4

### Protein Construction

A DNA sequence encoding the human S100A4 (NP\_002952.1) (Met 1-Lys 101) was expressed with the fused Fc region of human IgG1 at the N-terminus.

### Organism

Human

### Expression Host

Human Cells

## QC Testing

### Purity

> 95 % as determined by SDS-PAGE

### Endotoxin

< 1.0 EU per  $\mu\text{g}$  of the protein as determined by the LAL method

### Stability

Samples are stable for up to twelve months from date of receipt at  $-70^{\circ}\text{C}$

### Predicted N terminal

Glu 20

### Molecular Mass

The recombinant human Fc/S100A4 is a disulfide-linked homodimeric protein. The reduced monomer consists of 338 amino acids and has a predicted molecular mass of 38.4 kDa. As a result of glycosylation, the apparent molecular mass of rhFc/S100A4 monomer is approximately 40 kDa in SDS-PAGE under reducing conditions.

### Formulation

Lyophilized from sterile PBS, pH 7.4

1. 5 % trehalose and mannitol are added as protectants before lyophilization.

2. Please contact us for any concerns or special requirements.

## Usage Guide

### Storage

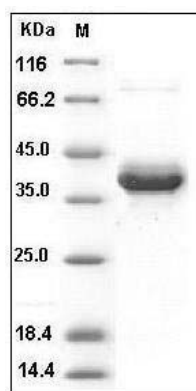
Store it under sterile conditions at  $-20^{\circ}\text{C}$  to  $-80^{\circ}\text{C}$ .

It is recommended that the protein be aliquoted for optimal storage. Avoid repeated freeze-thaw cycles.

### Reconstitution

Adding sterile water, prepare a stock solution of 0.25 mg/ml. Concentration is measured by UV-Vis.

### SDS-PAGE



Human S100A4 Protein (Fc Tag) SDS-PAGE