

# CWF19L2 antibody



Catalog Number: 109632

## Product name

CWF19L2 antibody

## Immunogen

[Human CWF19L2 Recombinant protein \(GST tag\)](#)

## Specificity

Human; other species not tested.

## Antibody description

CWF19L2 Rabbit Polyclonal antibody. Positive WB detected in HeLa cells, HEK-293 cells, Jurkat cells, PC-3 cells. Positive IHC detected in human kidney tissue, human brain tissue, human breast cancer tissue. Observed molecular weight by Western-blot: 103 kDa

## Preparation

This antibody was obtained by immunization of CWF19L2 recombinant protein (Accession Number: BC110442). Purification method: Antigen affinity purified.

## Formulation

PBS with 0.1% sodium azide and 50% glycerol pH 7.3.

## Storage

Store at -20°C. DO NOT ALIQUOT

## Clonality

Polyclonal

## Ig Type

Rabbit IgG

## Applications

ELISA, WB, IHC

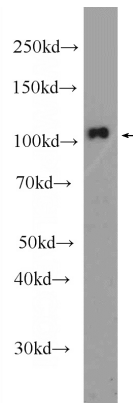
## Dilutions

Recommended Dilution:

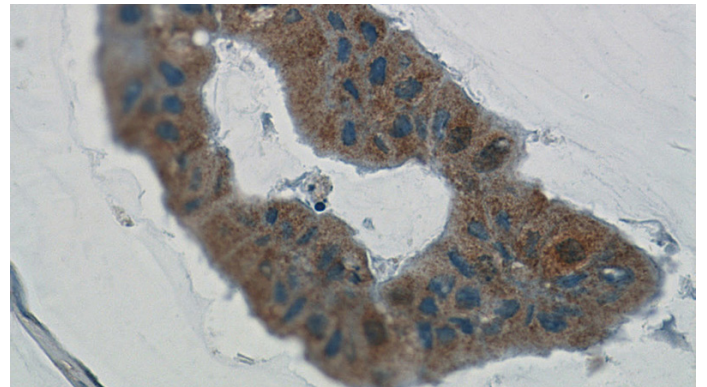
WB: 1:200-1:1000

IHC: 1:20-1:200

## Validations



HeLa cells were subjected to SDS PAGE followed by western blot with Catalog No:109632(CWF19L2 Antibody) at dilution of 1:300

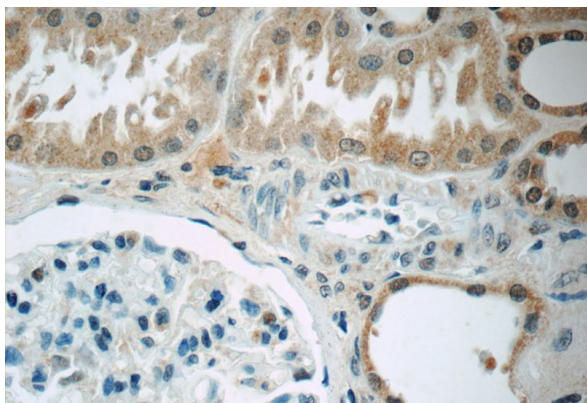


Immunohistochemistry of paraffin-embedded human breast cancer tissue slide using Catalog No:109632(CWF19L2 Antibody) at dilution of 1:50 (under 40x lens)

# CWF19L2 antibody

Catalog Number: 109632

---



Immunohistochemistry of paraffin-embedded human kidney tissue slide using Catalog No:109632(CWF19L2 Antibody) at dilution of 1:50 (under 40x lens)