

Anti-Syntaxin 16 Rabbit antibody



Catalog Number: 168632

Product name

Anti-Syntaxin 16 Rabbit antibody

Specificity

Human, Mouse, Rat

Antibody description

Syntaxin 16 Rabbit monoclonal antibody

Preparation

Antigen: A synthetic peptide of human Syntaxin 16

Formulation

Supplied in 50nM Tris-Glycine(pH 7.4), 0.15M NaCl, 40%Glycerol, 0.01% sodium azide and 0.05% BSA.

Storage

Store at 4°C short term. Aliquot and store at -20°C long term. Avoid freeze / thaw cycle.

Clonality

Monoclonal

Ig Type

Rabbit IgG

Applications

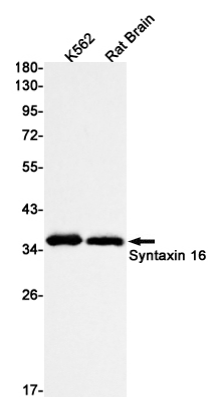
WB, ICC/IF

Dilutions

WB: 1/1000-1/5000

ICC/IF: 1/20

Validations



Western blot detection of Syntaxin 16 in K562,Rat Brain lysates using Syntaxin 16 Rabbit mAb(1:1000 diluted).Predicted band size:37kDa.Observed band size:37kDa.