

# Anti-Pancreasin/Marapsin/PRSS27 antibody



Catalog Number: 100632

## Product name

Anti-Pancreasin/Marapsin/PRSS27 antibody

## Immunogen

[Human Pancreasin/Marapsin/PRSS27 \(His Tag\) recombinant protein](#)

## Specificity

Human Pancreasin / Marapsin / PRSS27

## Antibody description

Rabbit monoclonal to  
Pancreasin/Marapsin/PRSS27

## Preparation

This antibody was obtained from a rabbit immunized with purified, recombinant Human Pancreasin / Marapsin / PRSS27 (rh Pancreasin / Marapsin / PRSS27; Q9BQR3; Met1-Lys290).

## Formulation

0.2  $\mu$ m filtered solution in PBS with 5% treha

## Storage

This antibody can be stored at 2°C-8°C for one month without detectable loss of activity. Antibody products are stable for twelve months from date of receipt when stored at -20°C to -80°C.

Preservative-Free.

Sodium azide is recommended to avoid contamination (final concentration 0.05%-0.1%). It is toxic to cells and should be disposed of properly. Avoid repeated freeze-thaw cycles.

## Clonality

Monoclonal

## Ig Type

Rabbit IgG

## Applications

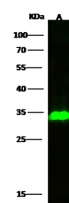
WB, IP

## Dilutions

WB: 1-10 $\mu$ g/ml

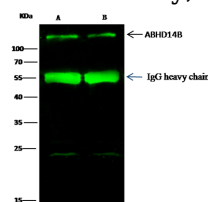
IP: 1-4  $\mu$ g/mg of lysate

## Validations



Lanes	A
Items	
Sample (whole cell lysate)	K562
Sample Volume ( $\mu$ g/lane)	30
Gel	13% SDS-PAGE reducing gel
Recommended Concentration	1-10 $\mu$ g/ml
Secondary Antibody	DyLight 800-labeled Antibody to Rabbit IgG (H+L), at 1:5000 dilution.
Explanation	Developed using Odyssey imaging system. Predicted band size : 32 kDa Observed band size : 32 kDa

Pancreasin / Marapsin / PRSS27 Antibody, Rabbit



Lanes	A	B
Items		
Sample (whole cell lysate)	Jurkat	Hela
Sample quantity	0.5 mg	
IP antibody quantity	2 $\mu$ g	
Protein G agarose	15 $\mu$ l of 50% Protein G Agarose	
Gel	13% SDS-PAGE reducing gel	
Primary antibody	ABHD148 antibody at 10 $\mu$ g/ml [Cat# 13913-R011]	
Secondary antibody	DyLight 800-labeled antibody to rabbit IgG (H+L), at 1:5000 dilution.	

MAb, Western blot

Pancreasin / Marapsin / PRSS27 Antibody, Rabbit  
MAb, Immunoprecipitation