

# Human CAMK2B/CAM2/CAMK2/CAMKB (His tag) recombinant protein



Catalog Number: 519232

## General Information

### Gene Name Synonym

Calcium/Calmodulin-Dependent Protein Kinase Type II Subunit Beta, CaM Kinase II Subunit Beta, CaMK-II Subunit Beta, CAMK2B, CAM2, CAMK2, CAMKB

### Protein Construction

A DNA sequence encoding the Human CAMK2B/CAM2/CAMK2/CAMKB Met1-Gln503 is expressed with a 6His tag at the C-terminus.

### Organism

Human

### Expression Host

E. coli

## QC Testing

### Purity

>95% as determined by SDS-PAGE.

### Endotoxin

<1.0 EU per  $\mu\text{g}$  protein as determined by the LAL

method.

### Stability

Store for up to 6 months at  $-20^{\circ}\text{C}$

### Formulation

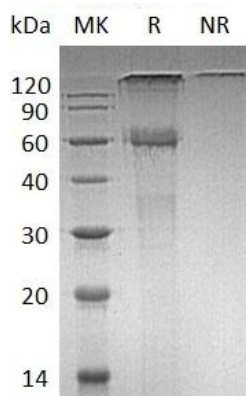
Supplied as a  $0.2\ \mu\text{m}$  filtered solution of 10mM HEPES, 150mM NaCl, pH 7.5.

## Usage Guide

### Storage

Store at  $<-20^{\circ}\text{C}$ , minimize freeze-thaw cycles.

### SDS-PAGE



Human CAMK2B/CAM2/CAMK2/CAMKB (His tag)  
recombinant protein