

# SIL1 antibody

Catalog Number: 115232

## Product name

SIL1 antibody

IHC: 1:20-1:200

IF: 1:10-1:100

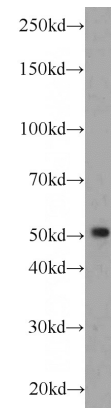
## Specificity

Human, Mouse; other species not tested.

## Validations

## Antibody description

SIL1 Rabbit Polyclonal antibody. Positive WB detected in L02 cells, mouse kidney tissue, mouse liver tissue. Positive IHC detected in human kidney tissue. Positive IF detected in HepG2 cells. Observed molecular weight by Western-blot: 52 kDa



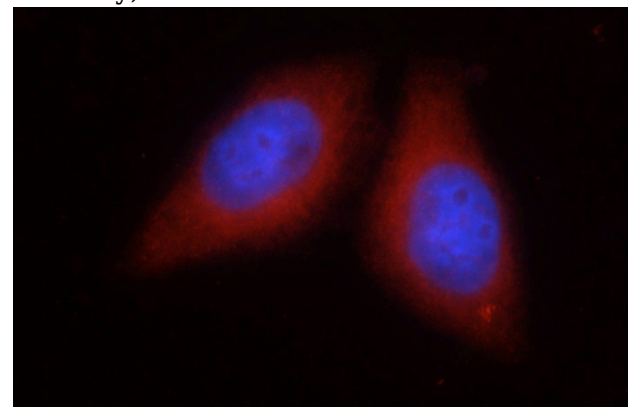
## Preparation

This antibody was obtained by immunization of SIL1 recombinant protein (Accession Number: NM\_022464). Purification method: Antigen Affinity purified.

L02 cells were subjected to SDS PAGE followed by western blot with Catalog No:115232(SIL1 antibody) at dilution of 1:1500

## Formulation

PBS with 0.02% sodium azide and 50% glycerol pH 7.3.



## Storage

Store at -20°C. DO NOT ALIQUOT

## Clonality

Polyclonal

## Ig Type

Rabbit IgG

## Applications

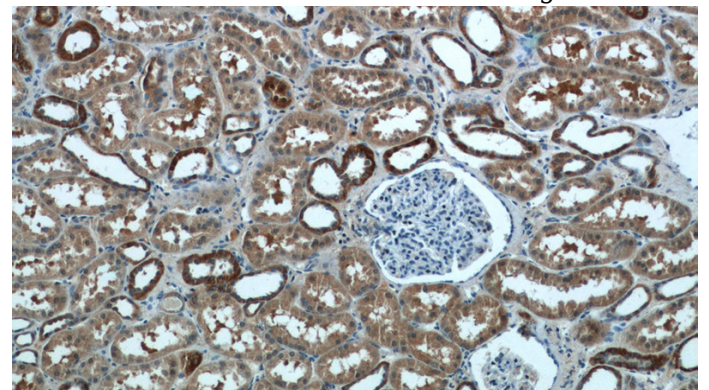
ELISA, WB, IF, IHC

## Dilutions

Recommended Dilution:

WB: 1:500-1:5000

Immunofluorescent analysis of HepG2 cells using Catalog No:115232(SIL1 Antibody) at dilution of 1:25 and Rhodamine-Goat anti-Rabbit IgG



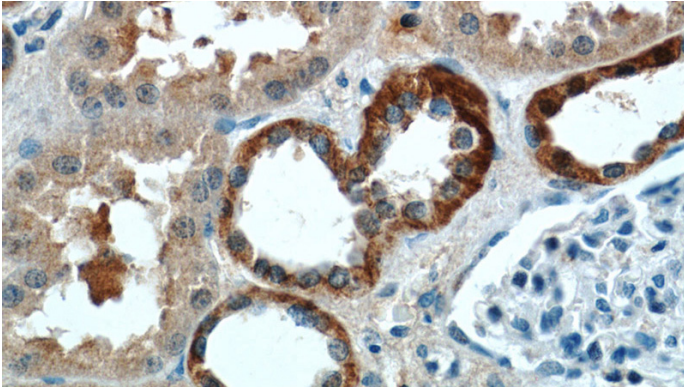
Immunohistochemistry of paraffin-embedded human kidney tissue slide using Catalog

# SIL1 antibody

Catalog Number: 115232

---

No:115232(SIL1 Antibody) at dilution of 1:50  
(under 10x lens)



Immunohistochemistry of paraffin-embedded  
human kidney tissue slide using Catalog  
No:115232(SIL1 Antibody) at dilution of 1:50  
(under 40x lens)