

# Anti-CD200 antibody



Catalog Number: 103232

## Product name

Anti-CD200 antibody

## Immunogen

[Mouse CD200 \(His Tag\) recombinant protein](#)

## Specificity

Mouse CD200

## Antibody description

Rabbit monoclonal to CD200

## Preparation

This antibody was obtained from a rabbit immunized with purified, recombinant Mouse CD200 (rM CD200; NP\_001076017.1; Met1-Gly232) and conjugated with PE under optimum conditions, the unreacted PE was removed.

## Formulation

Aqueous solution containing 0.5% BSA and 0.09% sodium azide

## Storage

This antibody is stable for 12 months from date of receipt when stored at 2°C-8°C. Protected from prolonged exposure to light. Do not freeze ! Sodium azide is toxic to cells and should be

disposed of properly. Flush with large volumes of water during disposal.

## Clonality

Monoclonal

## Ig Type

Rabbit IgG

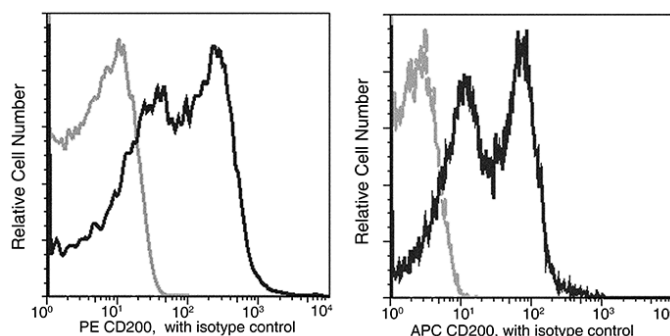
## Applications

FCM

## Dilutions

FCM

## Validations



CD200 Antibody (PE), Rabbit MAb, Flow cytometric

Analysis of CD200 expression on spleen lymphocytes.