

# Cynomolgus CD62L/L-Selectin (Fc Tag) recombinant protein



Catalog Number: 502232

## General Information

### Gene Name Synonym

CD62 antigen-like family member L; Leukocyte adhesion molecule 1; Leukocyte-endothelial cell adhesion molecule 1; Lymph node homing receptor

### Protein Construction

A DNA sequence encoding the cynomolgus SELL (Q95198) (Met1-Asn332) was expressed with the Fc region of human IgG1 at the C-terminus.

### Organism

Cynomolgus

### Expression Host

Human Cells

## QC Testing

### Activity

Measured by the ability of the immobilized protein to support the adhesion of U937 human histiocytic lymphoma cells.

When  $5 \times 10^4$  cells/well are added to cyno L-Selectin coated plates (10  $\mu\text{g}/\text{mL}$  with 100  $\mu\text{L}/\text{well}$ ), > 50% cells will adhere for 1 hour incubation at 37°C.

### Purity

(70.4+19.8) % as determined by SDS-PAGE

### Endotoxin

< 1.0 EU per  $\mu\text{g}$  of the protein as determined by the LAL method

### Stability

Samples are stable for up to twelve months from date of receipt at -70°C

## Predicted N terminal

Asp 29

## Molecular Mass

The recombinant cynomolgus SELL is a disulfide-linked homodimer. The reduced monomer comprises 545 amino acids and has a calculated molecular mass of 61.1 KDa. The apparent molecular mass of the protein is approximately 85 and 35 KDa respectively in SDS-PAGE.

## Formulation

Lyophilized from sterile PBS, pH 7.4

1. 5 % trehalose and mannitol are added as protectants before lyophilization.

2. Please contact us for any concerns or special requirements.

## Usage Guide

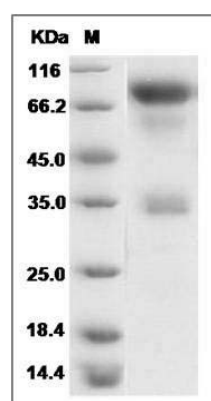
### Storage

Store it under sterile conditions at -20°C to -80°C. It is recommended that the protein be aliquoted for optimal storage. Avoid repeated freeze-thaw cycles.

### Reconstitution

Adding sterile water, prepare a stock solution of 0.25 mg/ml. Concentration is measured by UV-Vis.

## SDS-PAGE



# **Cynomolgus CD62L/L-Selectin (Fc Tag) recombinant protein**



Catalog Number: 502232

---

Cynomolgus CD62L / L-Selectin / SELL Protein (Fc Tag) SDS-PAGE