

Human PPP3CA (His Tag) recombinant protein



Catalog Number: 500232

General Information

Gene Name Synonym

CAM-PRP catalytic subunit; Calmodulin-dependent calcineurin A subunit alpha isoform

Protein Construction

A DNA sequence encoding the human PPP3CA (Q08209-1) (Ser2-Gln521) was fused with a polyhistidine tag at the N-terminus.

Organism

Human

Expression Host

Baculovirus-Insect Cells

QC Testing

Activity

Using the Octet RED System, the affinity constant (Kd) of human PPP3CA-His (Cat:500232) bound to Human PPIA-His (Cat:501254) was 0.9 nM.

Purity

> 94 % as determined by SDS-PAGE

Endotoxin

< 1.0 EU per μg of the protein as determined by the LAL method

Stability

Samples are stable for up to twelve months from date of receipt at -70°C

Predicted N terminal

His

Molecular Mass

The recombinant human PPP3CA consists of 538 amino acids and has a calculated molecular mass of 60.8 kDa. The recombinant protein migrates as an approximately 60 kDa band in SDS-PAGE under reducing conditions.

Formulation

Lyophilized from sterile 20mM Tris, 500mM NaCl, pH 8.0, 10% glycerol

1. 5 % trehalose and mannitol are added as protectants before lyophilization.
2. Please contact us for any concerns or special requirements.

Usage Guide

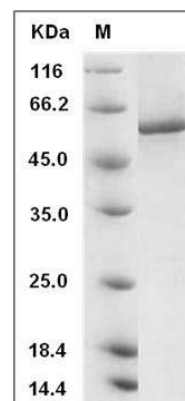
Storage

Store it under sterile conditions at -20°C to -80°C . It is recommended that the protein be aliquoted for optimal storage. Avoid repeated freeze-thaw cycles.

Reconstitution

Adding sterile water, prepare a stock solution of 0.25 mg/ml. Concentration is measured by UV-Vis.

SDS-PAGE



Human PPP3CA / Protein phosphatase 2B Protein (His Tag) SDS-PAGE