

CAP1 antibody

Catalog Number: 108932

Product name

CAP1 antibody

Immunogen

[Human CAP1 Recombinant protein \(His tag\)](#)

Specificity

Human, Mouse, Rat; other species not tested.

Antibody description

CAP1 Rabbit Polyclonal antibody. Positive IP detected in A431 cells. Positive WB detected in mouse skin tissue, A431 cells. Positive FC detected in HeLa cells. Positive IHC detected in human pancreas cancer tissue. Observed molecular weight by Western-blot: 52kd

Preparation

This antibody was obtained by immunization of CAP1 recombinant protein (Accession Number: NM_001350477). Purification method: Antigen affinity purified.

Formulation

PBS with 0.02% sodium azide and 50% glycerol pH 7.3.

Storage

Store at -20°C. DO NOT ALIQUOT

Clonality

Polyclonal

Ig Type

Rabbit IgG

Applications

ELISA, WB, IHC, FC, IP

Dilutions

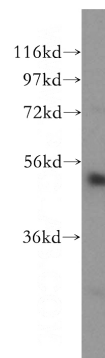
Recommended Dilution:

WB: 1:200-1:2000

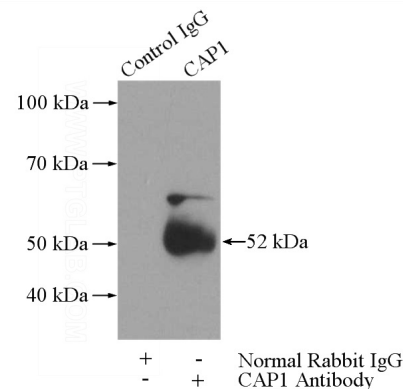
IP: 1:200-1:2000

IHC: 1:20-1:200

Validations



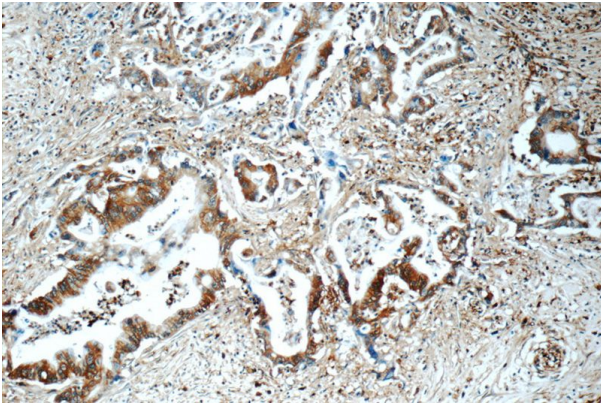
mouse skin tissue were subjected to SDS PAGE followed by western blot with Catalog No:108932(CAP1 antibody) at dilution of 1:500



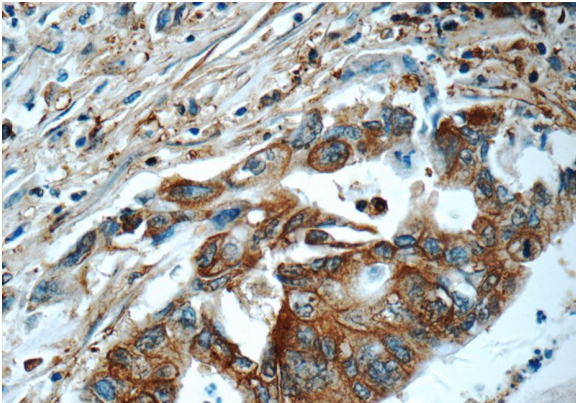
IP Result of anti-CAP1 (IP:Catalog No:108932, 3ug; Detection:Catalog No:108932 1:500) with A431 cells lysate 1520ug.

CAP1 antibody

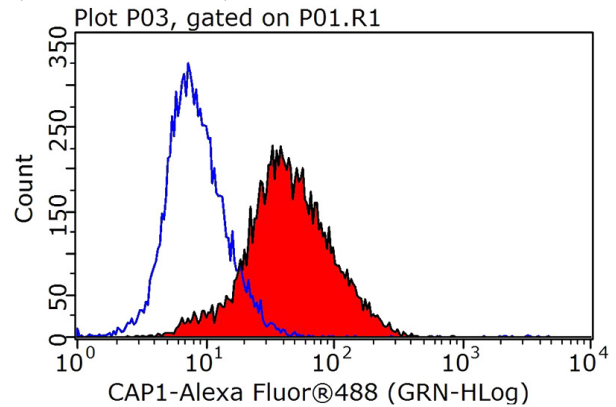
Catalog Number: 108932



Immunohistochemistry of paraffin-embedded human pancreas cancer tissue slide using Catalog No:108932(CAP1 Antibody) at dilution of 1:50 (under 10x lens)



Immunohistochemistry of paraffin-embedded human pancreas cancer tissue slide using Catalog No:108932(CAP1 Antibody) at dilution of 1:50 (under 40x lens)



1X10⁶ HeLa cells were stained with 0.2ug CAP1 antibody (Catalog No:108932, red) and control antibody (blue). Fixed with 90% MeOH blocked with 3% BSA (30 min). Alexa Fluor 488-conjugated AffiniPure Goat Anti-Rabbit IgG(H+L) with dilution 1:1000.