

# ZCCHC11 antibody



Catalog Number: 116932

## Product name

ZCCHC11 antibody

## Specificity

Human, Mouse; other species not tested.

## Antibody description

ZCCHC11 Rabbit Polyclonal antibody. Positive IF detected in HeLa cells. Positive IP detected in MCF-7 cells. Positive WB detected in MCF7 cells, HEK-293T cells, HeLa cells, human brain tissue. Observed molecular weight by Western-blot: 185 kDa

## Preparation

This antibody was obtained by immunization of Peptide (Accession Number: NM\_015269). Purification method: Antigen affinity purified.

## Formulation

PBS with 0.02% sodium azide and 50% glycerol pH 7.3.

## Storage

Store at -20°C. DO NOT ALIQUOT

## Clonality

Polyclonal

## Ig Type

Rabbit IgG

## Applications

ELISA, WB, IF, IP

## Dilutions

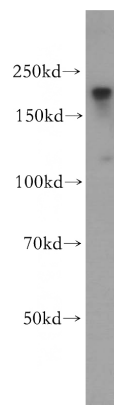
Recommended Dilution:

WB: 1:200-1:2000

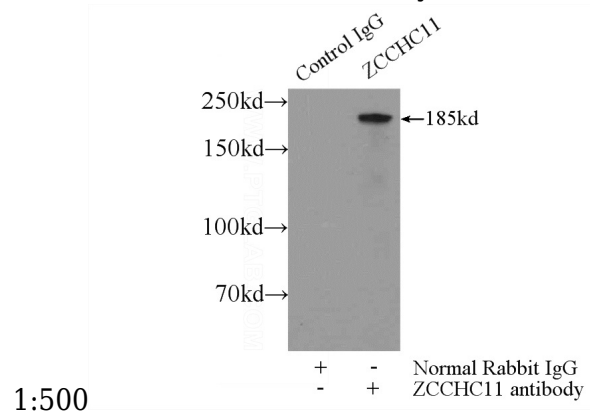
IP: 1:500-1:5000

IF: 1:20-1:200

## Validations



MCF7 cells were subjected to SDS PAGE followed by western blot with Catalog No:116932(ZCCHC11 antibody) at dilution of



IP Result of anti-ZCCHC11 (IP:Catalog No:116932, 5ug; Detection:Catalog No:116932 1:1000) with MCF-7 cells lysate 2000ug.

Immunofluorescent analysis of HeLa cells using Catalog No:116932(ZCCHC11 Antibody) at dilution of 1:50 and Rhodamine-Goat anti-Rabbit IgG