

Anti-PSME2 / PA28b antibody



Catalog Number: 104932

Product name

Anti-PSME2 / PA28b antibody

Immunogen

[Human PSME2 / PA28b \(His Tag\) recombinant protein](#)

Specificity

Human PSME2 / PA28b

No cross-reactivity in ELISA with E.coli cell lysate

Antibody description

Mouse monoclonal to PSME2 / PA28b

Preparation

This antibody was produced from a hybridoma resulting from the fusion of a mouse myeloma with B cells obtained from a mouse immunized with purified, recombinant Human PSME2 / PA28b (rh PSME2 / PA28b; PSME2_HUMAN; Met1-Tyr239). The IgG fraction of the cell culture supernatant was purified by Protein A affinity.

Formulation

0.2 µm filtered solution in PBS

Storage

This antibody can be stored at 2°C-8°C for one month without detectable loss of activity. Antibody products are stable for twelve months from date of receipt when stored at -20°C to -80°C. Preservative-Free.

Sodium azide is recommended to avoid contamination (final concentration 0.05%-0.1%). It is toxic to cells and should be disposed of properly. Avoid repeated freeze-thaw cycles.

Clonality

Monoclonal

Ig Type

Mouse IgG1

Applications

ELISA, WB, IP

Dilutions

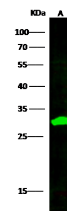
WB: 2-10 µg/ml

ELISA: 0.5-1 µg/mL

This antibody can be used at 0.5-1 µg/mL with the appropriate secondary reagents to detect Human PSME2 / PA28b. The detection limit for Human PSME2 / PA28b is approximately 0.039 ng/well.

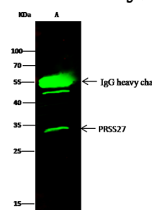
IP: 4-6 µg/mg of lysate

Validations



Lanes	A
Items	
Sample (whole cell lysate)	Hela
Sample Volume (µg/lane)	30
Gel	13% SDS-PAGE reducing gel
Recommended Concentration	2-10µg/ml
Secondary Antibody	Dylight 800 labeled Antibody to Mouse: IgG (H+L), at 1:7500 dilution.
	Developed using Odyssey imaging system.
Explanation	Predicted band size : 27 kDa Observed band size : 30 kDa

PSME2 / PA28b Antibody, Mouse MAb, Western



Lanes	A
Items	
Sample (whole cell lysate)	K562
Sample quantity	0.5 mg
IP antibody quantity	2 µg
Protein G agarose	15 µl of 50% Protein G Agarose
Gel	13% SDS-PAGE reducing gel
Primary antibody	PRSS27 antibody at 5 µg/ml [Cat# 12116-R107]
Secondary antibody	Dylight 800-labeled antibody to rabbit IgG (H+L), at 1:5000 dilution

blot

PSME2 / PA28b Antibody, Mouse MAb, Immunoprecipitation