

CPT1C-specific antibody



Catalog Number: 109532

Product name

CPT1C-specific antibody

WB: 1:200-1:2000

IP: 1:200-1:2000

Specificity

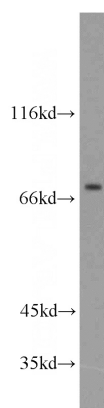
Human, Mouse, Rat; other species not tested.

IHC: 1:20-1:200

Antibody description

CPT1C-specific Rabbit Polyclonal antibody.
Positive IP detected in mouse testis tissue.
Positive WB detected in mouse brain tissue.
Positive IHC detected in human testis tissue, human brain tissue, human gliomas tissue.
Observed molecular weight by Western-blot: 70-82 kDa

Validations



Preparation

This antibody was obtained by immunization of CPT1C-specific recombinant protein (Accession Number: XM_047438159). Purification method: Antigen affinity purified.

mouse brain tissue were subjected to SDS PAGE followed by western blot with Catalog No:109532(CPT1C antibody) at dilution of 1:500

Formulation

PBS with 0.02% sodium azide and 50% glycerol pH 7.3.

Storage

Store at -20°C. DO NOT ALIQUOT

Clonality

Polyclonal

Ig Type

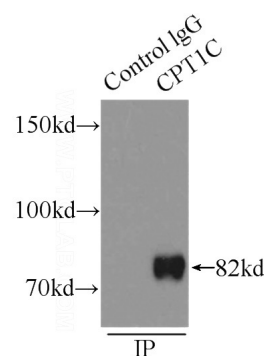
Rabbit IgG

Applications

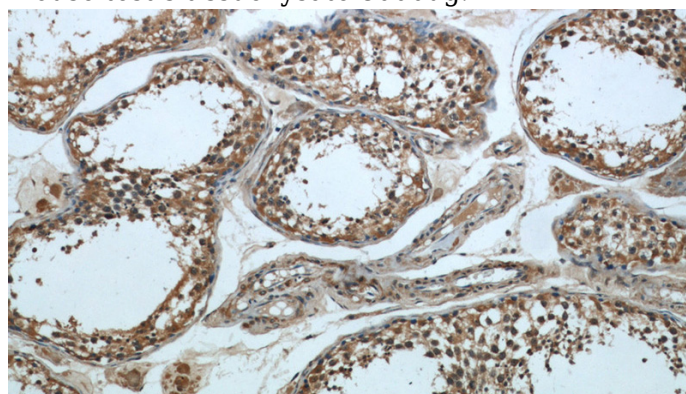
ELISA, WB, IHC, IP

Dilutions

Recommended Dilution:



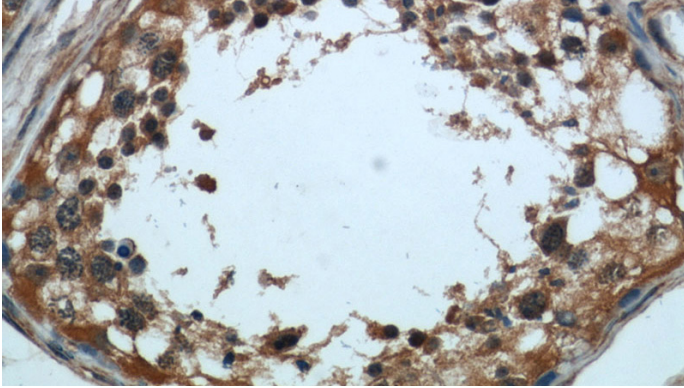
IP Result of anti-CPT1C (IP:Catalog No:109532, 5ug; Detection:Catalog No:109532 1:500) with mouse testis tissue lysate 8000ug.



CPT1C-specific antibody

Catalog Number: 109532

Immunohistochemical of paraffin-embedded human testis using Catalog No:109532(CPT1C antibody) at dilution of 1:50 (under 10x lens)



Immunohistochemical of paraffin-embedded human testis using Catalog No:109532(CPT1C antibody) at dilution of 1:50 (under 40x lens)