

Anti-KRT5/Cytokeratin5 antibody



Catalog Number: 106532

Product name

Anti-KRT5/Cytokeratin5 antibody

Specificity

Human KRT5

Antibody description

Rabbit monoclonal to KRT5/Cytokeratin5

Preparation

This antibody was obtained from a rabbit immunized with a synthetic peptide corresponding to the center region of the human KRT5.

Formulation

0.2 µm filtered solution in PBS

Storage

This antibody can be stored at 2°C-8°C for one month without detectable loss of activity. Antibody products are stable for twelve months from date of receipt when stored at -20°C to -80°C. Preservative-Free. Sodium azide is recommended to avoid contamination (final concentration 0.05%-0.1%). It is toxic to cells and should be disposed of properly. Avoid repeated freeze-thaw cycles.

Clonality

Monoclonal

Ig Type

Rabbit IgG

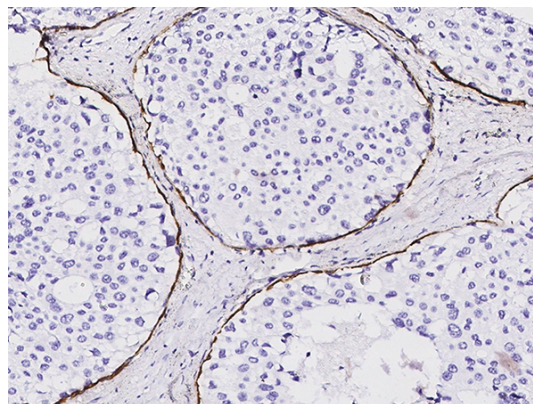
Applications

IHC-P

Dilutions

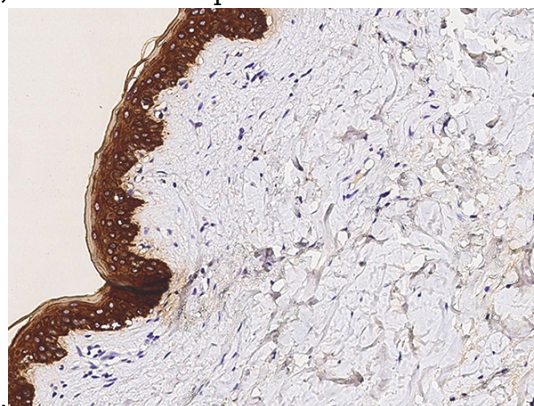
IHC-P: 1-10 µg/mL

Validations



KRT5 Antibody, Rabbit MAb,
Immunohistochemistry

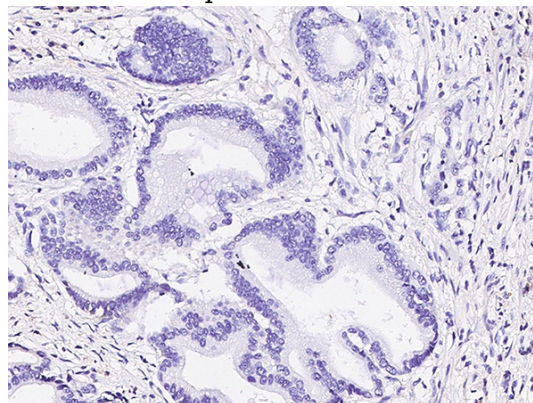
Immunochemical staining of human CK5 in human breast carcinoma with rabbit monoclonal antibody (5 µg/mL, formalin-fixed paraffin embedded



sections).

KRT5 Antibody, Rabbit MAb,
Immunohistochemistry

Immunochemical staining of human CK5 in human skin with rabbit monoclonal antibody (5 µg/mL, formalin-fixed paraffin embedded sections).



Anti-KRT5/Cytokeratin5 antibody



Catalog Number: 106532

KRT5 Antibody, Rabbit MAb,
Immunohistochemistry

Immunochemical staining of human CK5 in human

gastric cancer with rabbit monoclonal antibody (5
μg/mL, formalin-fixed paraffin embedded
sections).