

# APC1 antibody

Catalog Number: 108132

## Product name

APC1 antibody

WB: 1:1000-1:10000

IHC: 1:20-1:200

## Specificity

Human, Mouse, Rat; other species not tested.

## Antibody description

APC1 Rabbit Polyclonal antibody. Positive IHC detected in human testis tissue, human cervical cancer tissue, human stomach tissue. Positive WB detected in HeLa cells, HEK-293 cells, HT-1080 cells, K-562 cells, mouse brain tissue, Transfected HEK-293 cells. Observed molecular weight by Western-blot: 200-210 kDa

## Preparation

This antibody was obtained by immunization of APC1 recombinant protein (Accession Number: NM\_022662). Purification method: Antigen affinity purified.

## Formulation

PBS with 0.02% sodium azide and 50% glycerol pH 7.3.

## Storage

Store at -20°C. DO NOT ALIQUOT

## Clonality

Polyclonal

## Ig Type

Rabbit IgG

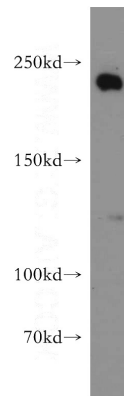
## Applications

ELISA, WB, IHC

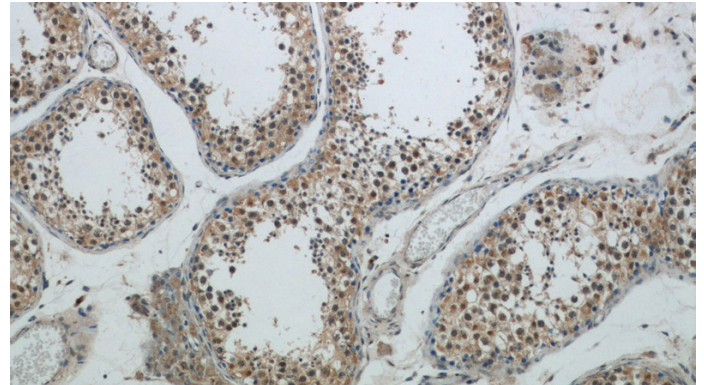
## Dilutions

Recommended Dilution:

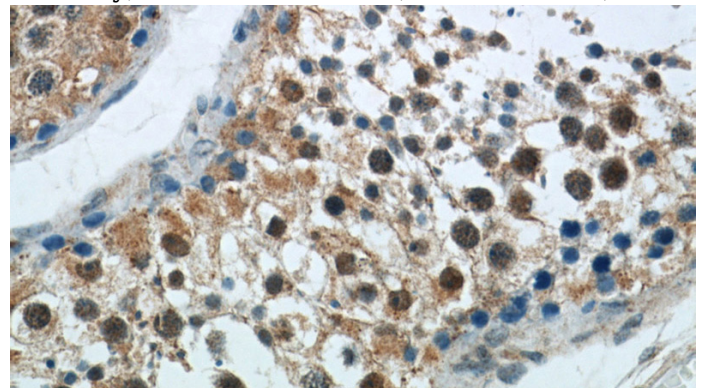
## Validations



HeLa cells were subjected to SDS PAGE followed by western blot with Catalog No:108132(ANAPC1 antibody) at dilution of 1:1500



Immunohistochemical of paraffin-embedded human testis using Catalog No:108132(ANAPC1 antibody) at dilution of 1:50 (under 10x lens)



Immunohistochemical of paraffin-embedded human testis using Catalog No:108132(ANAPC1

# APC1 antibody



Catalog Number: 108132

---

antibody) at dilution of 1:50 (under 40x lens)