

# SETMAR antibody



Catalog Number: 115132

## Product name

SETMAR antibody

## Specificity

Human; other species not tested.

## Antibody description

SETMAR Rabbit Polyclonal antibody. Positive WB detected in HL-60 cells, L02 cells. Positive IP detected in HL-60 cells. Observed molecular weight by Western-blot: 78 kDa

## Preparation

This antibody was obtained by immunization of SETMAR recombinant protein (Accession Number: BC008931). Purification method: Antigen affinity purified.

## Formulation

PBS with 0.1% sodium azide and 50% glycerol pH 7.3.

## Storage

Store at -20°C. DO NOT ALIQUOT

## Clonality

Polyclonal

## Ig Type

Rabbit IgG

## Applications

ELISA, WB, IP

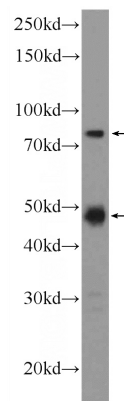
## Dilutions

Recommended Dilution:

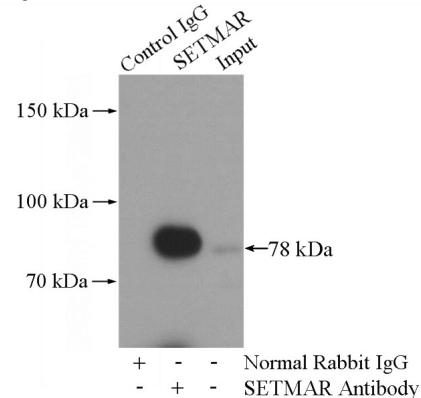
WB: 1:200-1:2000

IP: 1:200-1:2000

## Validations



HL-60 cells were subjected to SDS PAGE followed by western blot with Catalog No:115132(SETMAR Antibody) at dilution of 1:600



IP Result of anti-SETMAR (IP:Catalog No:115132, 4ug; Detection:Catalog No:115132 1:500) with HL-60 cells lysate 1600ug.