

SYNPO2L Polyclonal Antibody



Catalog Number: 164132

Product name

SYNPO2L Polyclonal Antibody

Specificity

Mouse

Antibody description

Polyclonal antibody to SYNPO2L

Preparation

Antigen: A synthetic peptide corresponding to a sequence within amino acids 700-800 of human SYNPO2L (NP_001107605.1).

Formulation

PBS with 0.02% sodium azide, 50% glycerol, pH7.3.

Storage

Store at -20°C. Avoid freeze / thaw cycles.

Clonality

Polyclonal

Ig Type

Rabbit IgG

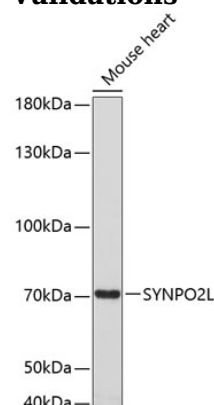
Applications

WB

Dilutions

WB 1:500 - 1:2000

Validations



Western blot - SYNPO2L Polyclonal Antibody

Western blot analysis of extracts of mouse heart, using SYNPO2L antibody at 1:3000 dilution. Secondary antibody: HRP Goat Anti-Rabbit IgG (H+L) at 1:10000 dilution. Lysates/proteins: 25ug per lane. Blocking buffer: 3% nonfat dry milk in TBST. Detection: ECL Enhanced Kit. Exposure time: 90s.