

# KRT36 antibody

Catalog Number: 112132

## Product name

KRT36 antibody

## Specificity

Human, Mouse, Rat; other species not tested.

## Antibody description

KRT36 Rabbit Polyclonal antibody. Positive WB detected in mouse skin tissue. Positive IHC detected in human skin cancer tissue. Observed molecular weight by Western-blot: 48kd

## Preparation

This antibody was obtained by immunization of KRT36 recombinant protein (Accession Number: BC043581). Purification method: Antigen affinity purified.

## Formulation

PBS with 0.02% sodium azide and 50% glycerol pH 7.3.

## Storage

Store at -20°C. DO NOT ALIQUOT

## Clonality

Polyclonal

## Ig Type

Rabbit IgG

## Applications

ELISA, WB, IHC

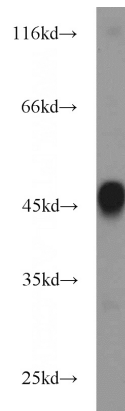
## Dilutions

Recommended Dilution:

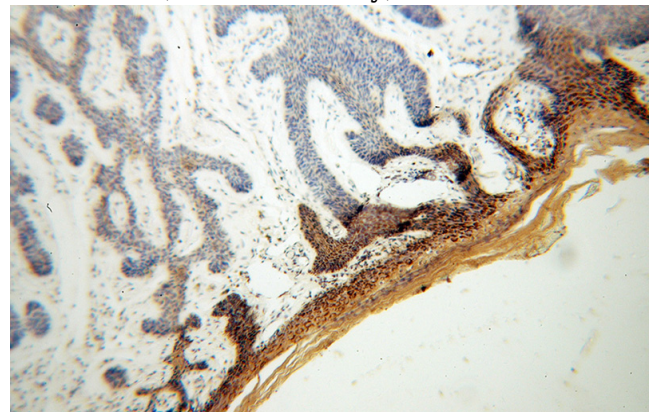
WB: 1:500-1:5000

IHC: 1:20-1:200

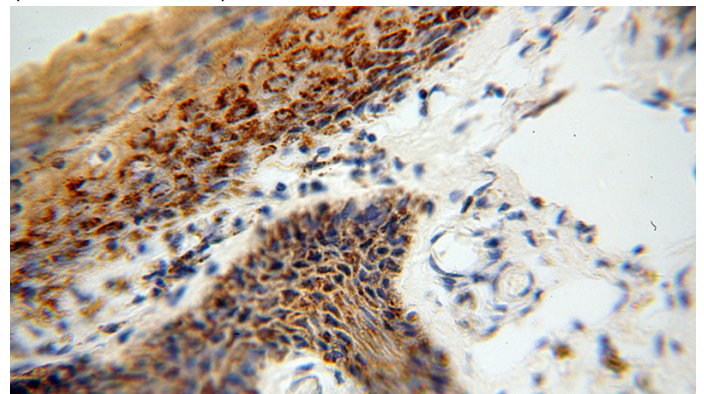
## Validations



mouse skin tissue were subjected to SDS PAGE followed by western blot with Catalog No:112132(KRT36 antibody) at dilution of 1:1000



Immunohistochemical of paraffin-embedded human skin cancer using Catalog No:112132(KRT36 antibody) at dilution of 1:100 (under 10x lens)



Immunohistochemical of paraffin-embedded human skin cancer using Catalog No:112132(KRT36 antibody) at dilution of 1:100 (under 40x lens)