

WIT1 antibody

Catalog Number: 116832

Product name

WIT1 antibody

Specificity

Human; other species not tested.

Antibody description

WIT1 Rabbit Polyclonal antibody. Positive IHC detected in human ovary tumor tissue, human nephroblastoma tissue.

Preparation

This antibody was obtained by immunization of WIT1 recombinant protein (Accession Number: BC002734). Purification method: Antigen affinity purified.

Formulation

PBS with 0.1% sodium azide and 50% glycerol pH 7.3.

Storage

Store at -20°C. DO NOT ALIQUOT

Clonality

Polyclonal

Ig Type

Rabbit IgG

Applications

ELISA, IHC

Dilutions

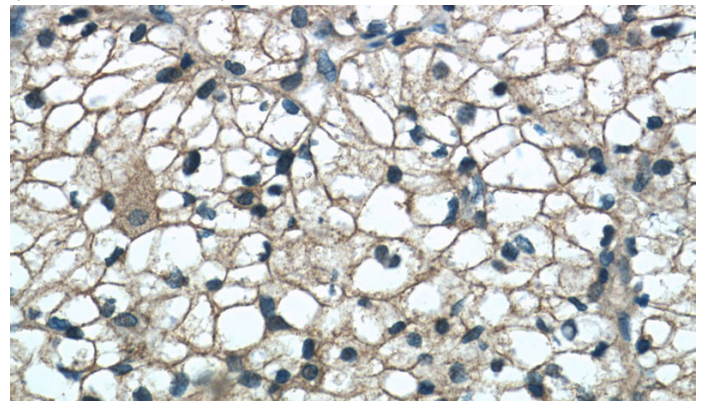
Recommended Dilution:

IHC: 1:20-1:200

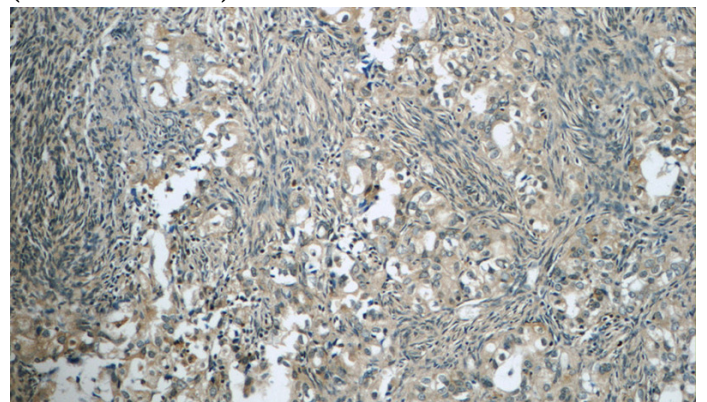
Validations



Immunohistochemistry of paraffin-embedded human nephroblastoma tissue slide using Catalog No:116832(WIT1 Antibody) at dilution of 1:50 (under 10x lens)



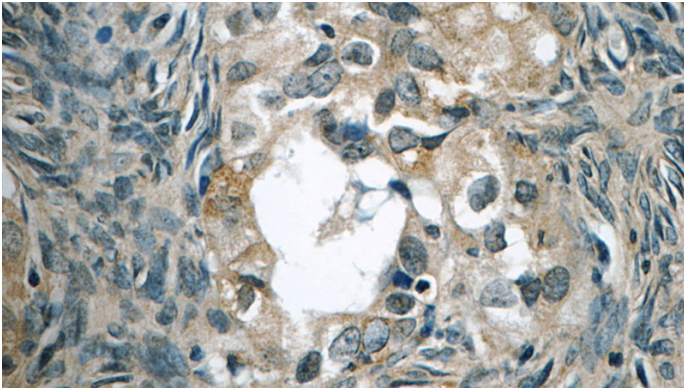
Immunohistochemistry of paraffin-embedded human nephroblastoma tissue slide using Catalog No:116832(WIT1 Antibody) at dilution of 1:50 (under 40x lens)



Immunohistochemistry of paraffin-embedded human ovary tumor tissue slide using Catalog No:116832(WIT1 Antibody) at dilution of 1:50 (under 10x lens)

WIT1 antibody

Catalog Number: 116832



Immunohistochemistry of paraffin-embedded human ovary tumor tissue slide using Catalog No:116832(WIT1 Antibody) at dilution of 1:50 (under 40x lens)