

SULT2B1 antibody

Catalog Number: 115832

Product name

SULT2B1 antibody

IP: 1:200-1:1000

IHC: 1:20-1:200

Specificity

Human, Mouse, Rat; other species not tested.

Antibody description

SULT2B1 Rabbit Polyclonal antibody. Positive IHC detected in human prostate cancer tissue, human placenta tissue. Positive IP detected in mouse skin tissue. Positive WB detected in mouse skin tissue. Observed molecular weight by Western-blot: 39 kDa

Preparation

This antibody was obtained by immunization of SULT2B1 recombinant protein (Accession Number: NM_177973). Purification method: Antigen affinity purified.

Formulation

PBS with 0.02% sodium azide and 50% glycerol pH 7.3.

Storage

Store at -20°C. DO NOT ALIQUOT

Clonality

Polyclonal

Ig Type

Rabbit IgG

Applications

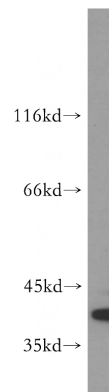
ELISA, WB, IHC, IP

Dilutions

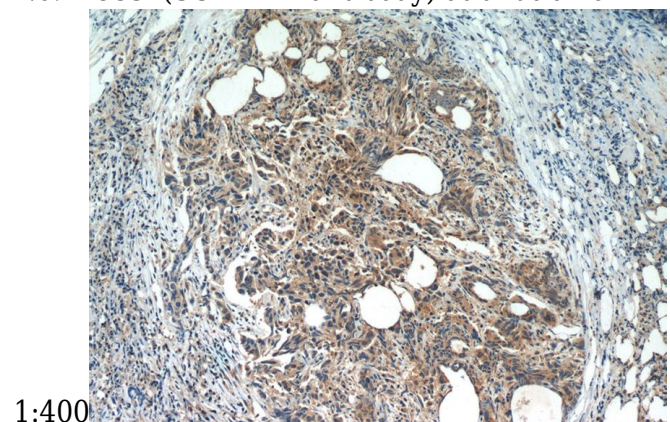
Recommended Dilution:

WB: 1:500-1:5000

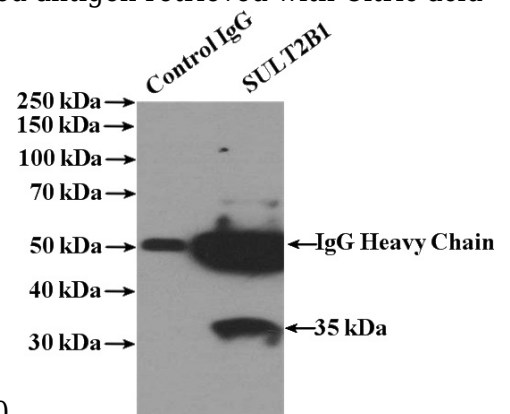
Validations



mouse skin tissue were subjected to SDS PAGE followed by western blot with Catalog No:115832(SULT2B1 antibody) at dilution of



Immunohistochemistry of paraffin-embedded human prostate cancer slide using Catalog No:115832(SULT2B1 Antibody) at dilution of 1:50. Heat mediated antigen retrieved with Citric acid



buffer, pH6.0.

SULT2B1 antibody



Catalog Number: 115832

IP Result of anti-SULT2B1 (IP:Catalog No:115832, 4ug; Detection:Catalog No:115832 1:400) with mouse skin tissue lysate 3200ug.